

BSi

Bioinformatics Solutions Inc.



## PEAKS Studio 3.0 User Manual

*For use with the PEAKS Studio  
De novo sequencing  
and protein identification  
software*

[www.bioinformaticsolutions.com](http://www.bioinformaticsolutions.com)

BIOINFORMATICS SOLUTIONS INC

# PEAKS Studio 3.0 User's Manual

---

© Bioinformatics Solutions Inc.  
145 Columbia St. West Suite 2B  
Waterloo, Ontario Canada N2L 3L2  
Phone 519-885-8288 • Fax 519-885-9075

Written by: Iain Rogers  
Please contact the author for questions  
or suggestions for improvement.

---

<b>INTRODUCTION.....</b>	<b>3</b>
INTRODUCTION TO PEAKS STUDIO 3.0.....	3
HOW TO USE THIS USER'S MANUAL .....	3
Scope.....	4
Terminology and Abbreviations Glossary.....	4
<b>GETTING STARTED WITH PEAKS STUDIO 3.0 .....</b>	<b>7</b>
WHAT WE WILL NEED .....	7
Package contents.....	7
System requirements.....	7
Instrumentation .....	7
INSTALLATION.....	8
REGISTERING PEAKS.....	9
DATABASE CONFIGURATION .....	10
<b>FEATURES WALKTHROUGH .....</b>	<b>14</b>
BEGIN THE WALKTHROUGH .....	14
<b>GRAPHICAL USER INTERFACE.....</b>	<b>18</b>
WINDOWS, DIALOGUES, FRAMES AND REPORTS .....	19
PEAKS Studio 3.0 main window.....	19
Auto de Novo Parameters Dialogue .....	20
Protein Identification Parameters Dialogue.....	21
PEAKS Properties Dialogue .....	23
Enzyme/PTM Editing Dialogue.....	23
PTM Editing Dialogue .....	24
Ion Table Settings Dialogue .....	24
Protein Identification Result Window.....	26
Main Processing Window.....	27
Ion Editor.....	29
Export Image Dialogue .....	29
Print Image Dialogue.....	31
TOOLBARS .....	31
Main window toolbar .....	31
Main Processing Window Toolbar .....	32
<b>PEAKS STUDIO CONFIGURATION.....</b>	<b>34</b>
PEAKS PROPERTIES CONFIGURATION .....	34
Enzyme/PTMs Set editor.....	35
Creating a new Enzyme/PTMs set.....	35
Editing an Enzyme/PTMs set .....	38
Viewing an Enzyme/PTMs set .....	38
Removing an Enzyme/PTMs set .....	38
PTM Editor .....	38
Creating a New PTM.....	39
Editing a PTM .....	40
Removing a PTM .....	41
Database Manager.....	41
Load/Configure a new database.....	41
Remove a Database .....	41
Edit a Database.....	42
Set the Default Database .....	42
Moving/Updating a Database .....	42
IMPORTING AND EXPORTING PEAKS PROPERTIES.....	43
PEAKS ENVIRONMENT PREFERENCE CONFIGURATION .....	45
Environment.....	47
Colors.....	48
Auto de novo.....	48
Protein Identification .....	49
Manual de novo.....	49
Merge Spectra.....	51
<b>PEAKS STUDIO USAGE.....</b>	<b>52</b>

LOADING DATA INTO PEAKS STUDIO 3.0 .....	53
<i>Opening data files</i> .....	53
<i>Loading a directory full of data files</i> .....	55
<i>Importing RAW data</i> .....	55
<i>Importing Data from the ABI 4700</i> .....	55
System Requirements .....	55
Configuration: .....	56
Steps to do the data extraction: .....	56
USING PEAKS STUDIO WITH MODIFICATIONS (PTM) .....	56
AUTO DE NOVO SEQUENCING .....	58
VIEWING AUTO DE NOVO RESULTS .....	60
PREPARING TO EDIT SEQUENCING RESULTS .....	61
MANUAL DE NOVO SEQUENCING .....	63
<i>Creating a fresh spectrum for sequencing</i> .....	63
<i>Manual De novo Operations</i> .....	63
Selecting a peak .....	63
Measuring distance along the m/z scale .....	63
Measure the m/z difference between two PEAKS .....	64
Deselect a peak .....	64
Zoom in on part of the spectrum .....	64
Add (remove) ions to (from) a peak .....	64
Using sequence tags .....	65
Undoing an edit .....	65
Redoing an edit .....	65
ENTERING A SEQUENCE TO SEE HOW WELL IT FITS THE DATA .....	66
PROTEIN IDENTIFICATION .....	68
<i>PEAKS protein identification</i> .....	68
<i>inChorus protein identification</i> .....	70
VIEWING PROTEIN IDENTIFICATION RESULTS .....	71
<i>Viewing inChorus protein identification results</i> .....	71
<i>Viewing PEAKS protein identification results</i> .....	73
MANIPULATING DATA FILES .....	77
<i>Editing Precursor information</i> .....	77
<i>Merging MS/MS scans of the same peptide</i> .....	77
<i>Cutting and Copying Spectrum Data</i> .....	78
<i>Pasting Spectrum Data</i> .....	78
SELECTING UNMATCHED DE NOVO RESULTS .....	79
RUNNING PROTEIN IDENTIFICATION ON SELECT SPECTRA .....	80
USING THE MASS CALCULATOR .....	81
CREATING A HIGH-THROUGHPUT WORKFLOW .....	82
SAVING RESULTS .....	83
<b>FREQUENTLY ASKED QUESTIONS.....</b>	<b>84</b>
<b>PROGRAM DEFAULTS.....</b>	<b>87</b>
ENVIRONMENT .....	87
SPECTRUM COLORS .....	87
AUTO DE NOVO .....	87
DATABASE SEARCH PHASE OF PROTEIN ID .....	88
MANUAL DE NOVO .....	88
FILE TYPES .....	88
<b>ABOUT BIOINFORMATICS SOLUTIONS INC.....</b>	<b>89</b>
<b>PEAKS SOFTWARE LICENSE .....</b>	<b>90</b>

# Introduction

## Introduction to PEAKS Studio 3.0

*PEAKS makes the interpretation of MS/MS data much easier and much faster.*

**P**EAKS is an innovative software system designed to derive amino acid sequences and identify proteins from tandem mass spectrometry data. After running MS/MS on a protein sample, PEAKS performs *de novo* sequencing and database search identification of the protein(s) and peptides using raw experimental data.

PEAKS Studio 3.0 provides peptide sequence and protein identification results via an intuitive interface, allowing for rapid visual interpretation. PEAKS provides both auto and manual *de novo* sequencing tools for detailed examination of MS/MS spectra, providing the flexibility to manually modify auto *de novo* results when searching for additional sequence possibilities.

## How to use this user's manual

This user's manual is intended to help us get started using PEAKS Studio 3.0, acquaint us with its functionality, show us how to customize PEAKS to our application, allow us to work efficiently with the interface, provide a task based reference, and help us with troubleshooting. As such, this manual is organized into chapters based on these categories. Use the table of contents at the front of this manual to access the relevant section. If searching for the definition of a particular term (or abbreviation), please consult the glossary – found in this section. The glossary will tell us what a particular term means, but it will not tell us how it applies to PEAKS usage.

---

## Scope

PEAKS users are assumed to be familiar with computer usage, and the operating system environment. As such, it is beyond the scope of this manual to instruct the user on the use of windows, dialogue boxes, menus, file storage etc. Please refer to the operating system's manual, or computer help books for such information. Similarly, PEAKS users are expected to be familiar with mass spectrometry, standard operating practices and data.

## Terminology and Abbreviations Glossary

**m/z:** mass to charge ratio.

**Deconvolution:** rearrangement of the spectrum to show each monoisotopic peak as if it were singly charged. Thus, to reposition them on the scale, PEAKS multiplies the m/z of ion's that were doubly charged by two. Note that the deconvolved scale PEAKS shows is 'at +1.'

**a-ions:** an N-terminal fragment holding at least one charge; similar to b-ions and c-ions. This is a prefix fragment of the peptide. The a-ion's mass will be the sum of the masses of the N terminal group, plus the intervening neutral amino acid residues, subtract the mass of Carbon Monoxide.

**b-ions:** an N-terminal fragment holding at least one charge; similar to a-ions and c-ions. This is a prefix fragment of the peptide. The b-ion's mass will be the sum of the masses of the N terminal group, plus the intervening neutral amino acid residues.

**c-ions:** an N-terminal fragment holding at least one charge; similar to a-ions and b-ions. This is a prefix fragment of the peptide. The c-ion's mass will be the sum of the masses of the N terminal group, plus the intervening neutral amino acid residues, plus the mass of ammonia.

**x-ions:** a C terminal fragment holding at least one charge; similar to y-ions and z-ions. This is a suffix fragment of the peptide. The x-ion's mass will be the sum of the masses of the C terminal group, plus the intervening neutral amino acid residues, plus the mass of Carbon Monoxide.

**y-ions:** a C terminal fragment holding at least one charge; similar to x-ions and z-ions. This is a suffix fragment of the peptide. The y-ion's mass will be the sum of the masses of the C terminal group, plus the intervening neutral amino acid residues, plus the mass of H<sub>2</sub>.

**z-ions:** a C terminal fragment holding at least one charge; similar to x-ions and y-ions. This is a suffix fragment of the peptide. The z-ion's mass will be the sum of the masses of the N terminal group, plus the intervening neutral amino acid residues, subtract the mass of ammonia.

**Residue:** as used in this manual, a residue refers to what remains of an amino acid once it has become part of a peptide, or peptide fragment. In this manual, residues are referred to by their original amino acid names.

**Resolution:** refers to the precision of an instrument. On a spectrum, this is reflected by how close together can two PEAKS be and still be told apart.

**Mass accuracy:** this refers to the accuracy of the spectrometer and its resulting data. On a spectrum, this is reflected by how close the PEAKS are to the actual masses of the ions they represent.

**ESI (Electrospray Ionization):** A method for ionizing a sample into the mass spectrometer.

**MALDI (Matrix-Assisted Laser Desorption/Ionization):** A method for ionizing a sample into the mass spectrometer. This has a characteristic effect of only producing singly charged ions.

**PTM (Post Translational Modification):** A protein, just translated and hence newly formed, may differ from its final form as a result of interaction with the cellular environment (or the experimental environment). As they interact chemically with the environment, residues may gain or lose molecules. This change is referred to as a post-translational modification. Since PTM changes the mass of residues, it must be accounted for when sequencing peptides by mass spectrometry.

**Built-in PTM:** PEAKS comes equipped with a library of possible post-translational modifications. These can be incorporated into a *de novo* analysis at the click of a button.

**Customized PTM:** If the post-translational modification we are looking for is not in the PEAKS PTM set, we may create our own entry, or modify an existing one. This will appear as a customized PTM in the set.

**Enzyme:** The residues PEAKS can find in different positions in the sequence. This is based on information about the enzyme used to digest our protein sample.

**PTM set:** A listing of all possible (built-in and custom entered) post-translational modifications that PEAKS can use as a part of its analysis.

**Enzyme/PTM set:** Combined, the enzyme information and post-translational modification information provide PEAKS with the relevant parameters of the experiment/sample. This will be applied to the corresponding data set when PEAKS performs its *de novo* analysis. It is a required parameter.

**Fixed modification:** selecting a post-translational modification as a fixed modification tells PEAKS that this modification is applied to all occurrences of the residue(s) that the PTM can act on.

**Variable modification:** selecting a post-translational modifications as a variable modification tells PEAKS that this modification may or may not be applied to any given occurrence of the residue(s) that the PTM can act on.

**FASTA (Fast-All):** A standard sequence database file format used for protein identification. PEAKS can identify proteins from any FASTA-format database of proteins.

**PKL:** The file format associated with Micromass instruments

**DTA:** The file format associated with SEQUEST software

**MGF:** The file format associated with Mascot. software

**BSI (Bioinformatics Solutions Inc.):** The makers of PEAKS and other fine bioinformatics software.

**ANZ file:** a PEAKS 'zip-compressed' XML-based ANNotated spectrum file format. ANZ files preserve all the information from the PEAKS session.

**ANN data file:** within the ANZ file, a folder contains ANN data files that store the MS/MS information and peptide information of one spectrum.

**ANN index file:** within the ANZ file, is one compressed file used to organize the data; the ANN index file links to a directory containing multiple ANN data files.

## Getting started with PEAKS Studio 3.0

*Everything we need to know from the beginning and step by step.*

**T**his section of the manual will guide us through the process of installation and configuration of PEAKS Studio 3.0. If we run into any problems we can refer to the frequently asked questions section of this manual. If problems persist, contact technical support.

### What we will need

#### Package contents

The PEAKS Studio 3.0 package should contain:

- This manual
- PEAKS Studio 3.0
- Release Notes

#### System requirements

PEAKS Studio 3.0 will run on most platforms with the following requirements:

- Equivalent or superior processing power to a Pentium at 500 MHz.
- At least 512 MB of memory (RAM). 1024MB is recommended.
- JAVA Virtual Machine 1.4 or better.

#### Instrumentation

PEAKS Studio 3.0 will work with data from any type of tandem mass spectrometer.

It was originally built for use with Q-TOF instruments, but has been tuned to work with many other instrument types (Ion-Trap, TOF-TOF, FTMS, etc.). The more resolution and mass accuracy an instrument gives, the better the results from PEAKS Studio's *de novo* analysis.

#### **A note on ion-trap instruments**

Ion trap data is usually of lower resolution than Q-TOF data, but PEAKS Studio 3.0 can still use it to sequence peptides. One simply has to configure PEAKS for use with ion trap. This setting can be set by selecting “ION Trap” as the instrument in the auto *de novo* dialogue box – discussed later.

**mzXML is a standard data format from the Sashimi Project. It is an XML based format.**

PEAKS will accept data directly from Waters/Micromass instruments in .pkl and .RAW formats, Thermo-Finnegan instruments in .dta format, the ABI 4700 (directly from the database) and data from any other instrument that can be converted into .dta, .pkl, mzXML or .mgf.

## **Installation**

**If we already have PEAKS installed on our system, we should uninstall it before proceeding.**

1. Close all programs that are currently running and end all non-system tasks.
2. Insert the PEAKS Studio 3.0 disc into the CD-ROM drive. This is the BSI disk which lists its contents as
  - PEAKS Software
  - PEAKS Movies
  - PEAKS Tutorial
3. Auto-run should automatically load the installation software. If it does not, find the CD-ROM drive and open it to access the disc. Click on the exe file.
4. A menu screen will appear with the title “PEAKS Studio 3.0”. Select “Install Peaks Studio”.
5. The installation utility will begin the install. Wait while it does so. When the “PEAKS Studio 3.0” installation dialogue appears, click the “Next” button.

6. Read the license agreement. If we agree to it, we change the radio button at the bottom to select “I accept the terms of the License Agreement” and click “Next”.
7. Next we choose the folder/directory in which we’d like to install PEAKS Studio 3.0. Press the “Choose...” button to browse our system and make a selection, or type a folder name in the textbox. Click “Next”.
8. Choose where we’d like to place icons for PEAKS Studio 3.0. The default will put these icons in the programs section of our start menu. Click “Next”.
9. Review the choices we have made. We can click “Previous” if we’d like to make any changes or click “Next” if those choices are correct.
10. PEAKS Studio 3.0 will now install on our system. We may cancel at any time by pressing the “Cancel” button in the lower left corner.
11. When installation is complete, click “Done”. The “PEAKS Studio 3.0” menu screen should still be open. One may view movies and materials from here. To access this menu again, we simply insert the disc in our CD-ROM drive.

## Registering PEAKS

**The first time we run PEAKS**, we will be told that the product is not registered. Press the “Ok” button and a dialogue will appear. Enter the registration key that came with the product – whether it be a key for the full version or time limited trial version. We must also enter our name, the name of our organization, and the MAC address of the machine we are going to use PEAKS on. If we are connected to the internet, registration will be completed automatically. If all is well, a dialogue will show “Registration Successful” and PEAKS will load.

**Re-registering PEAKS** may be necessary if our license has expired or if we wish to update the license. We will need to obtain a new registration key from BSI. Once we have obtained this new key, select “Register Peaks” from the Help menu. The “License Upgrade” dialogue box will appear, cautioning us that we are about to update the license. Press the “Ok” button to continue. Follow the on-screen instructions.



## Database Configuration

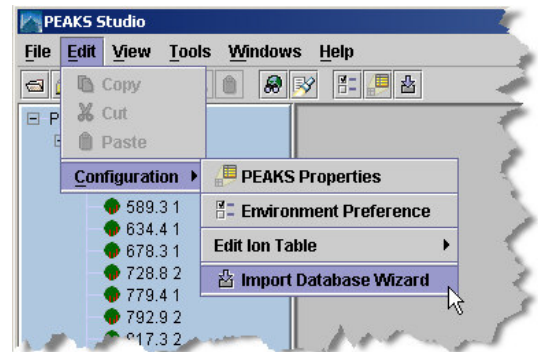
In addition to *de novo* sequencing of peptides, PEAKS Studio 3.0 also has the ability to search through a database search to identify proteins. But in order to use this function, PEAKS must have access to a protein or EST database in FASTA format or an EST database of DNA sequences. We can point PEAKS to an existing database on our system, or download one. This is database configuration.

We can use PEAKS without the database search; PEAKS will perform *de novo* sequencing only.

**WARNING: Downloading a database can take a long time (8+ hours), depending on connection speed.**

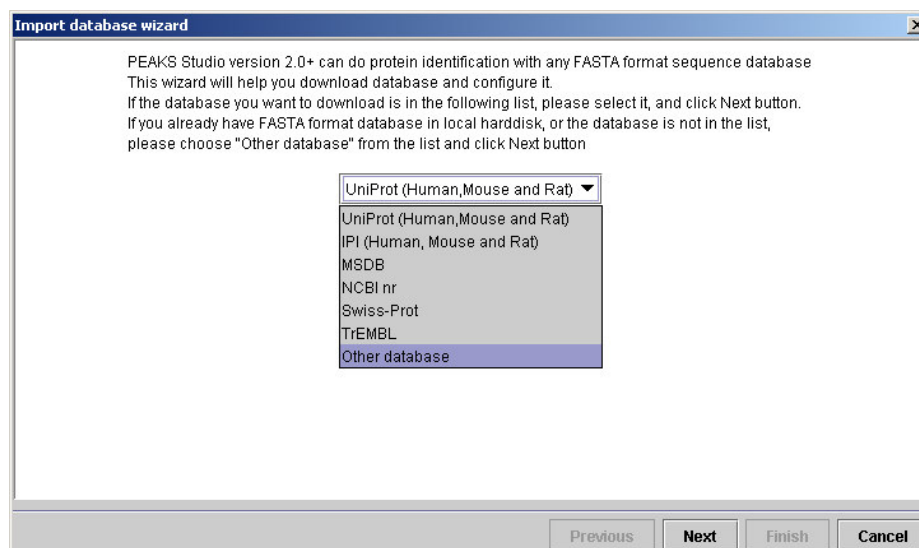
To configure a database:

1. Load PEAKS Studio 3.0. If we have not yet configured a database, the wizard will appear automatically. Otherwise...
2. In the 'edit' menu, select "Configuration", then "Import Database Wizard"



3. The Import Database Wizard will load and ask us to select a database to download – from the dropdown list. **If we already have a database we wish to use, we can select "Other database" from the dropdown list and skip to step6.** Click "Next"

**The next section provides a walkthrough of PEAKS Studio 3.0's main functionality using the Swiss-Prot database.**



**Microsoft Internet Explorer, for example, is an FTP client. You may use Internet explorer and the provided URL to download a database.**

4. Having selected a database, the Import Database Wizard will provide us with some information about that database. If this is, in fact, the database we wish to use, click the provided link to begin downloading. A dialogue box will appear with instructions on downloading using file transfer protocol (FTP). It does not matter where we put the download file, but we must remember where it is.

#### **A note on downloading**

The links in the Wizard may be outdated because the owners of those download locations may change their URL periodically. If this is the case, remove all but the domain name and browse from there.

`ftp://ftp.ebi.ac.uk/pub/databases/MassSpecDB/msdb.fasta.z`  
becomes:  
`ftp://ftp.ebi.ac.uk/`

5. The database we downloaded may be in a compressed file, perhaps a .zip file. We must find the file and use a decompression utility, such as WinZip, to extract its contents. It makes sense to place the extracted file in a location that PEAKS Studio 3.0 can easily access.
6. Return to the Import Database Wizard and click the "Next" button. This screen will allow us to configure the database. Click on the hyperlink next to each field for more information.

- PEAKS will ask us to enter the database nickname. This is a nickname that we chose to represent the database we are configuring. We must enter at least one character.
- The Path textbox shows where the database is located. It will be blank, so we must tell PEAKS where the database is. Type the location of the file into the textbox, or we can browse to find the file on our system. We must sure to select the FASTA database, **not the compressed file of the same name**.
- If we chose one of the public standard databases (in step: 3) its format style will be displayed in the advanced options box. The selected database format is shown in the dropdown list. Accession number information and the way PEAKS parses the database headers – i.e. the parsing rules – are shown in the textboxes below.
- If our database is an EST database containing DNA sequences, check the 'EST database' checkbox.
- If we chose an “other database” (in step: 3) we must enter parsing parameters ourselves by typing in the textboxes. Alternatively, if our database format is the same as one of the public databases, we can choose to apply that database's format when PEAKS reads our database. Select the database that is similar to ours from the dropdown list and **press the apply button** to fill the textboxes with the appropriate parsing rules.

**Database header format is important for protein ID result reports. If parsed correctly, accession numbers and protein names will be shown in full.**

The delimiter is the character used to separate multiple headers.

7. Press the “Finish” button to complete the database configuration.

We can repeat this process to configure a number of another databases. Once configured, a database need not be configured again unless we update the database itself.


## Features Walkthrough

*Let's familiarize ourselves with PEAKS*

This section of the manual will walk us through most of the basic functionality of PEAKS Studio 3.0. After completing this section we will have seen how easy it is to load and view a data file, perform *de novo* sequencing, and database search protein identification.

### Begin the walkthrough

Download and configure the Swiss-Prot database. The procedures for doing so are outlined in the previous section.

Run PEAKS Studio 3.0 and open a datafile by clicking the  icon on the toolbar in the upper left corner of the PEAKS window, or selecting “Open” from the “File” menu.

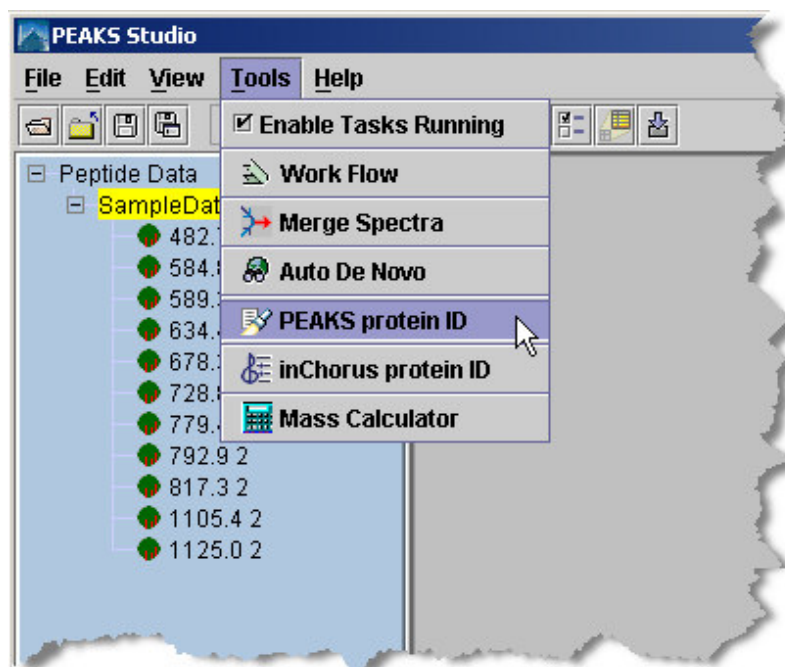
Sample data is located in the “C:\Program Files\PEAKS Studio\data\multiple spectra” folder. Load the file “SampleData.pkl” by clicking on it, then clicking “Open.” In the PEAKS Studio Demo, the demo sample data will load automatically on startup under the heading SampleData.pkl.

**See the section entitled “Merging Spectra” for more help.**

After clicking “Open”, PEAKS Studio 3.0 will ask if we want to merge spectra. In the dialogue box that appears, choose 0.01 using the drop down list box. Spectra whose precursor masses are within this range of each-other will be merged together.

The data file will appear in the left-hand frame. Make sure “SampleData.pkl” (i.e. the data file) is selected.

In the “Tools” menu, select “Protein Identification”



The following dialogue should appear:

**Enter the settings as shown. Settings can be changed by clicking on the drop down list and selecting one of the options.**

**Protein Identification**

**Protein Identification Options**

Search in database: SwissProt

Parent mass error tolerance: 0.1

Fragment mass error tolerance: 0.1

Enzyme and PTM: Trypsin with Cam

Instrument: Quadrupole-TOF

Report top: 10

[For best results, try error tolerance of 0.1 for data from Quadrupole-TOF](#)

☐ Use existing peptide sequences

☒ Use existing peptide sequences and the results from fresh auto de novo

**Auto De Novo Options**

Parent mass error tolerance: 0.1

Fragment mass error tolerance: 0.1

Enzyme and PTM: Trypsin with Cam

Report top: 5

☒ Preprocess before data analysis

**Edit Databases and Enzyme/PTM Sets** **OK** **Cancel**

Click “OK”, after entering the settings shown, to commence PEAKS auto *de novo*.

The process will take about one minute, after which PEAKS database search will proceed. In total, the process takes less than two minutes for this sample (depending on the system’s processing speed and memory). The PEAKS auto *de novo* algorithm derives sequence candidates for each of the eleven spectra in our example data file. These sequence candidate results for all eleven spectra in the example are then used for the database search component of PEAKS Studio 3.0. PEAKS uses a unique sequence tag plus fragment ion mass matching approach to protein identification.

Click “Protein ID Result” under the file name in the Peptide Data frame (left). PEAKS Studio 3.0 presents a list of proteins that it believes to be the best match for the sample. This index lists them by accession number, ranked in descending order from highest score on downward.

**The numbers under the “Mass” heading represent the mass of the protein displayed. The “Coverage” numbers represent the percentage of the proteins sequence covered by the matching peptides.**

Result from database Swiss-Prot(0.1 0.1 Trypsin with Cam)

Accession	Mass	Score	Coverage	Description
<a href="#">CYC_BOV</a> <a href="#">more</a>	11547.01	99.36%	50%	>CYC_BOVIN (P62894) Cytochrome c
<a href="#">GNA11_C</a> <a href="#">more</a>	23099.809	30.34%	2.53%	>GNA11_CANFA (P52206) Guanine nucleotide-binding protein, alpha-11 subunit (Fragment)

Since CYC\_BOVIN is at the top of the list it is most likely that the sample contains Cytochrome c. Since one cannot distinguish between Bovine Cytochrome c and Equine Cytochrome c (or that of some other organisms), it is not necessarily Bovine Cytochrome c; CYC\_BOVIN is displayed simply because it is the first entry in the database. Clicking the [more](#) hyperlink next to CYC\_BOVIN will show a listing of other possible Cytochrome c.

The listing, as shown above, is simply an index. To see why PEAKS chose Cytochrome c as its best possible protein candidate, click the [CYC\\_BOVIN](#) hyperlink. The report will scroll to the following:

<a href="#">CYC_BOV</a> <a href="#">more...</a> >CYC_BOVIN (P62894) Cytochrome c						
<b>Mass:</b> 11547.01 <b>Score:</b> 99.36% <b>Coverage:</b> 50% <a href="#">[Show missed de novo results]</a>						
Mz	Charge	Mr(calc)	Start	End	Score	Peptide
482.7	2	945.5171	92	99	99%	<a href="#">EDLIAYLK</a>
584.8	2	1149.6042	28	38	99%	<a href="#">TGPNLHGLFGR</a>
634.4	1	615.3744	9	13	96.04%	<a href="#">IFVQK</a>
678.3	1	659.36426	74	79	99%	<a href="#">YIPGTK</a>
728.8	2	1437.6525	40	53	99%	<a href="#">TGQAPGFSYTDANK</a>
779.4	1	760.43054	80	86	71.13%	<a href="#">MIFAGIK</a>
792.9	2	1565.7474	39	53	90.94%	<a href="#">KTGQAPGFSYTDANK</a>
<a href="#">[Return to top]</a>						

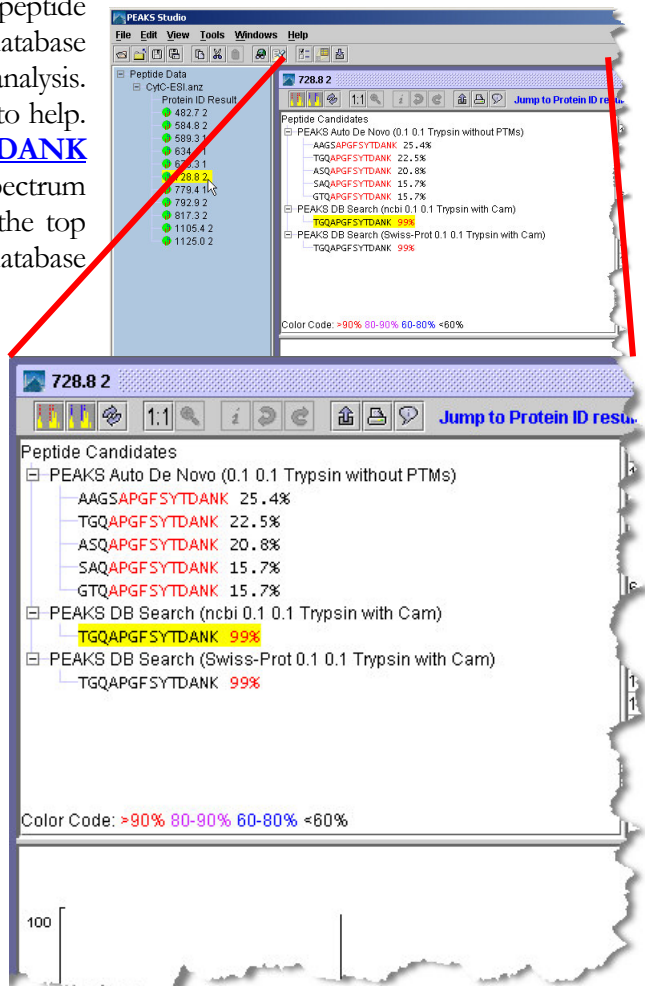
Above, 8 of the original 11 spectrum were found to have a matching sequence with Cytochrome c. For example, the search found the peptide EDLIAYLK in the 482.7 spectrum. Each peptide match shows a high confidence: strong evidence for having found the correct protein. We can see a list of good spectra that did not match up to this protein by clicking the [\[Show missed \*de novo\* results\]](#) link.

We can also see exactly where the peptide fits into the protein sequence. To see where the match was made click the [CYC BOVIN](#) hyperlink (the one right above the peptide results). This brings up a “Protein View” window with the matching sequences highlighted in red. Close this window now.

As mentioned above, the peptide sequence results are based on a database search guided by an initial *de novo* analysis. Let’s see how the *de novo* was able to help. Click on the [TGQAPGFSYTDANK](#) hyperlink. This will bring up the spectrum 728.8 2 results window. Look in the top right frame to see the *de novo* and database results.

Color coding shows positional confidence scores. By the letters coded in red we can see that the PEAKS auto *de novo* analysis returned, with >90% confidence, the partial peptide sequence APGFSYTDANK, but was not as sure of the first three residues. The PEAKS DB Search was able to confirm this result, returning: TGQAPGFSYTDANK.

Clicking on the Peptide Data Frame, and selecting another spectrum, e.g. 589.3 1, will allow us to view the results from that spectrum without having to return to the protein identification result. Alternatively, click on “Protein ID Result” to return to the report.



Thus concludes our walkthrough of PEAKS Studio 3.0’s basic features.

## Graphical User Interface

*A reference section to help us find our way around.*

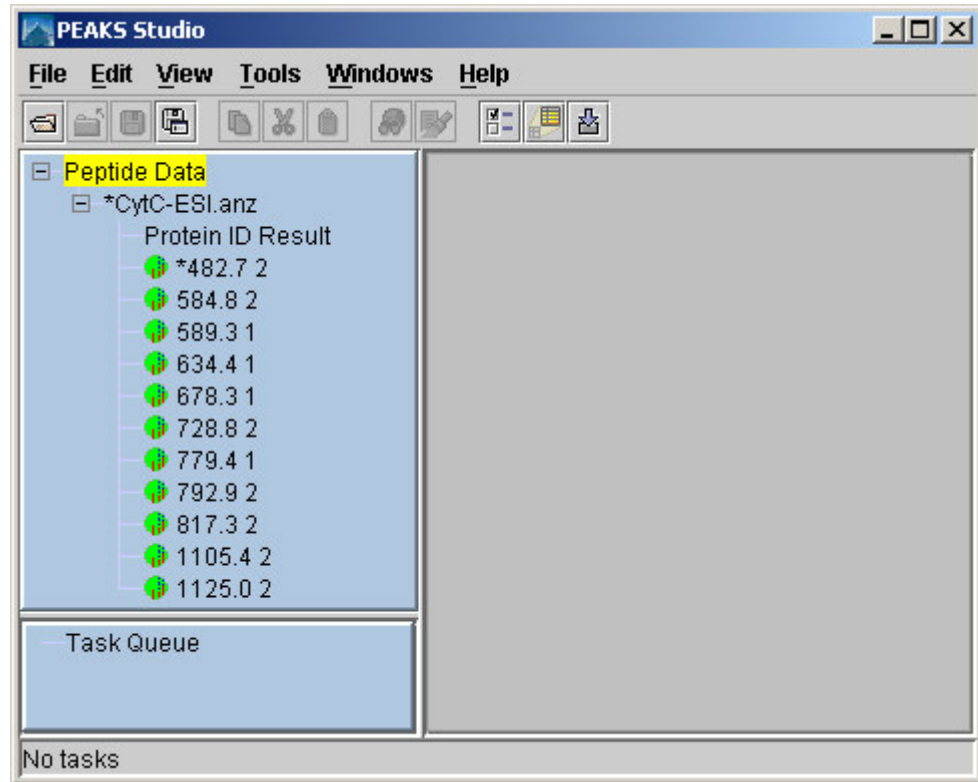
This chapter deals with interface elements. It is meant to be used as a reference so we can look up certain interface elements when we get stuck. For instructions on how to use PEAKS Studio to perform certain tasks, the section entitled “Using PEAKS Studio” will be more instructive.

The first part of this chapter describes **windows, dialogues, frames and reports**. This tells us what certain dialogue boxes, windows and frames do and how to read them.

The second part of this chapter deals with **toolbars**. Toolbars are a very useful way to quickly get at the functions we use most.

# Windows, Dialogues, Frames and Reports

## PEAKS Studio 3.0 main window



Comprises:

- **Peptide data frame (left):** This displays a listing of parent ions by m/z and charge. Clicking on one will bring up the its MS/MS spectrum. The colored dot by each spectrum shows dark green for unprocessed, or light green for sequenced (or partially sequenced). An asterisk (\*) next to a spectrum shows that it contains unsaved information.

Spectra are grouped by data files, or by nodes (which act like data files). Select a data file or node by clicking on its name (i.e. click on CytC-ESI.anz in the above example), or a spectrum within a data file by clicking on it. Use the ' + ' and ' - ' boxes to expand and collapse the view.


- **Task Queue frame (bottom left):** Shows running tasks, sorted by priority.

- **Working area (right):** This is where the Protein Identification Result Window and the Main Processing windows appear.
- **Menu bar:** access file, edit, view, tools, windows, and help commands.
- **Main window toolbar:** quick access to many commands. See “Toolbars” section below

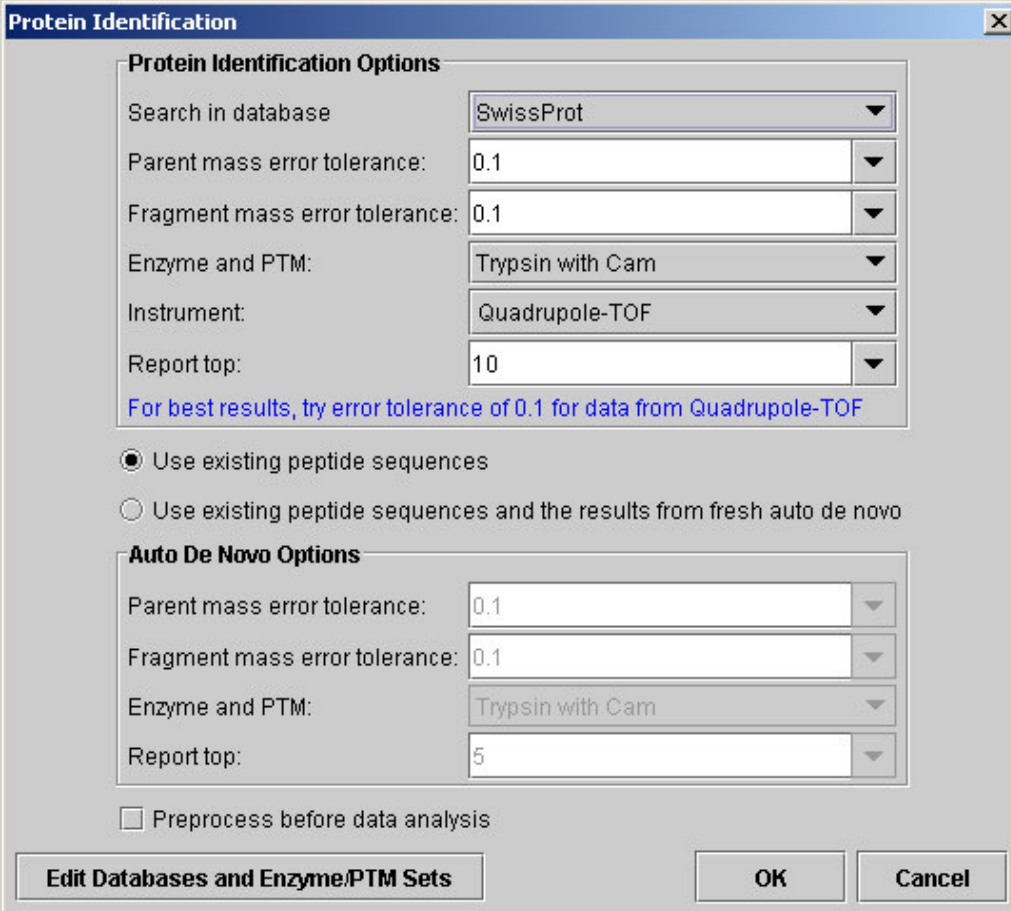
**This dialogue will appear each time we run auto *de novo*. If we always use the same settings, set them as default and *de novo* will proceed automatically.**

## Auto de Novo Parameters Dialogue

- **Parent mass error tolerance:** determines how much random and systematic experimental error on the parent/precursor ion PEAKS will account for in its analysis. Select a tolerance from the dropdown list.
- **Fragment mass error tolerance:** determines how much random and systematic experimental error on the fragment/daughter ion PEAKS will account for in its analysis. Select a tolerance from the dropdown list.
- **Enzyme and PTM:** choose from a dropdown list of enzymes that we used to digest our protein sample, and PTM that have acted on it.
- **Report top:** set how many peptide sequences PEAKS will report. Choose from a dropdown list.
- **Instrument:** choose the type of spectrometer that produced our data. Choose from a dropdown list.

- **Use this configuration as default:** check this box to keep these settings. The PEAKS Properties dialogue will no longer appear before auto *de novo*. It can be accessed any time by pressing the “Edit Environment Preference”  toolbar button, to load the Environment Preference Dialoged and then clicking the “auto *de novo*” tab.
- **Preprocess before auto de novo:** PEAKS Studio has its own built-in preprocessor for removing noise, centroiding, and peak charge recognition from MS/MS data. Check this box to turn preprocessing on.
- Click the “Edit PEAKS Properties” button to see the PEAKS Properties dialogue (discussed below).

## Protein Identification Parameters Dialogue



**Protein Identification**

**Protein Identification Options**

Search in database: SwissProt

Parent mass error tolerance: 0.1

Fragment mass error tolerance: 0.1

Enzyme and PTM: Trypsin with Cam

Instrument: Quadrupole-TOF

Report top: 10

[For best results, try error tolerance of 0.1 for data from Quadrupole-TOF](#)

☒ Use existing peptide sequences

☐ Use existing peptide sequences and the results from fresh auto de novo

**Auto De Novo Options**

Parent mass error tolerance: 0.1

Fragment mass error tolerance: 0.1

Enzyme and PTM: Trypsin with Cam

Report top: 5

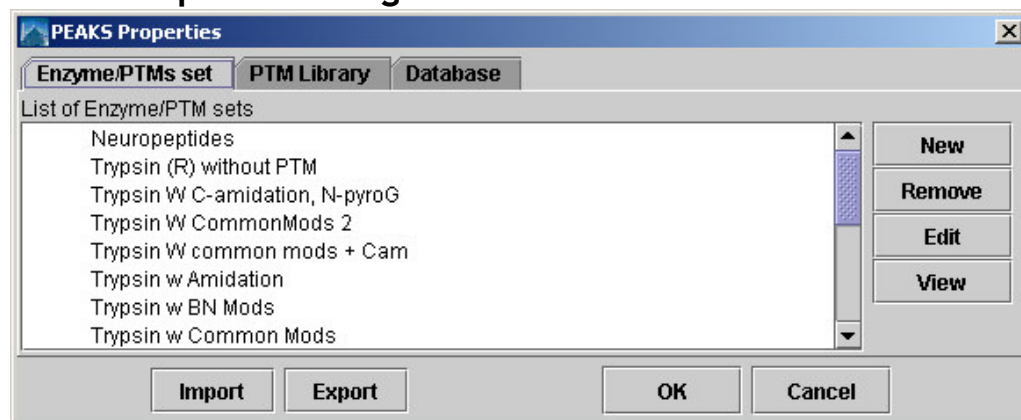
☐ Preprocess before data analysis

**Edit Databases and Enzyme/PTM Sets** **OK** **Cancel**

This dialogue shows the same options for auto *de novo*, plus some options specific to protein identification:

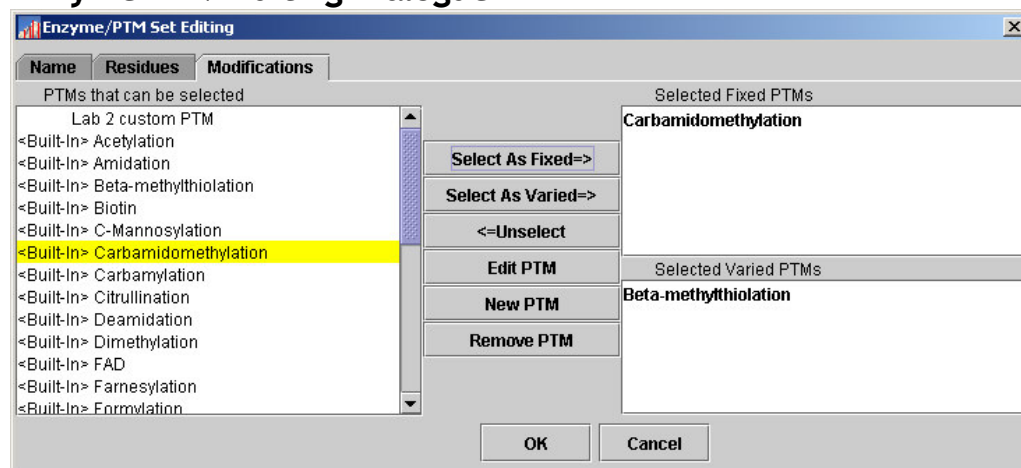
- **Parent mass error tolerance:** determines how much error PEAKS will allow on the parent/precursor mass when searching through the database. Select a tolerance from the dropdown list.
- **Fragment mass error tolerance:** determines how much error PEAKS will allow on the fragment/daughter mass when searching through the database. Select a tolerance from the dropdown list.
- **Enzyme and PTM:** choose from a dropdown list of enzymes that we used to digest our protein sample, and PTM that have acted on it.
- **Instrument:** choose the type of spectrometer that produced our data. Choose from a dropdown list.
- **Report top:** from the dropdown list, choose the maximum number of protein candidates to report.
- **Use existing peptide sequences:** Select one of these radio buttons to either use sequence data that we've already created, or to perform auto *de novo* sequencing before the database search portion of our protein identification. The database search phase of protein identification uses whatever sequence information we already have, to filter through the database. If we have not already *de novo* sequenced our data (or if we wish to re-sequence *de novo*) we should perform auto *de novo* sequencing prior to the database search process.
- **Auto *de novo* options:** these are the same set of options as can be accessed from the auto *de novo* parameters dialogue.
- Click the "Edit Databases and ENZYME/PTM Sets" button to see the PEAKS Properties dialogue (discussed below).

## PEAKS Properties Dialogue



- **Enzyme/PTMs set tab:** Displays a list of built-in and user-defined Residues/PTMs sets. You may edit and create Enzyme/PTMs sets from here.
- **PTM tab:** Displays a list of built-in and user-defined PTMs. You may edit and create PTM from here.
- **Database tab:** Displays a list of databases available to PEAKS. You may make new databases available to PEAKS from here.

## Enzyme/PTM Editing Dialogue



This dialogue is used in the process of creating or editing an ENZYME/PTM set. The three tabs in this dialogue allow you to establish different attributes of the set. (Shown above: the Post Translational Modifications tab). The process of editing and creating an ENZYME/PTM set is described in another section of this manual.

**This dialogue allows us to create or edit a PTM**

## PTM Editing Dialogue

The PTM Editing Dialogue box contains the following fields and values:

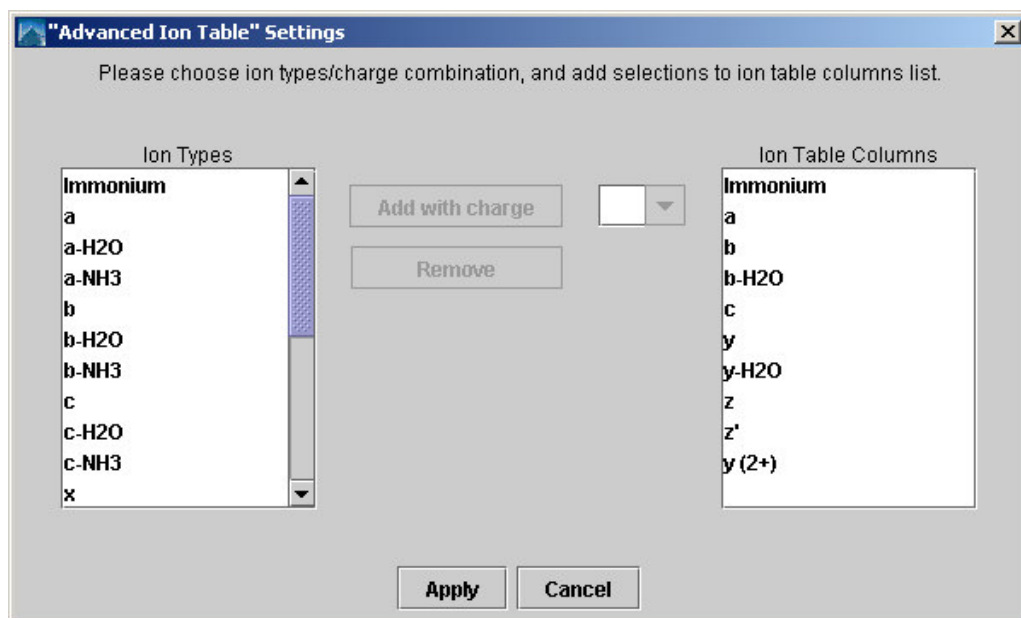
- Name: Acetylation
- Abbreviation: (empty)
- Mass (Monoisotopic): 42.0106
- Neutral Loss Mass (Monoisotopic): 0.0
- Formula: (empty)
- Residues that can be modified:
  - Non-location specific: K
  - N-terminus: ADCEQGILMPSTV
  - C-terminus: (empty)
- Rule: all kingdom

- **Name:** This will appear in the PTM list
- **Abbreviation:** This will appear in the auto *de novo* results, if it is found.
- **Mass (monoisotopic):** The mass that the residue gains or loses as a result of the PTM. Enter this numerically here, or enter the chemical formula below.
- **Neutral Loss Mass:** The mass that the modified residue loses as a result of fragmentation. E.g. 28 would signify a loss of 28 Daltons.
- **Formula:** The chemical formula of the PTM. This will automatically enter the mass.
- **Residues that can be modified:** Enter residues that can be modified anywhere, residues that can only be modified at the N-terminus and residues that can only be modified at the C-terminus.
- **Rule:** user entered, a comment for our reference.

## Ion Table Settings Dialogue

There are two such dialogues, one each for the 'Advanced' Ion Table, and the 'Basic' Ion table. The two dialogues are identical but for the table they effect.

See the below section entitled Main Processing Window for a description of the Ion Table itself.



**The 'Basic' and 'Advanced' Ion tables differ only in the number of ions they can display. The 'Basic' table displays up to six ions.**

- **Ion Types list:** A listing of all the types of ions PEAKS Studio considers in its analysis.
- **Ion Table Columns list:** A list of the columns that will appear in the ion table, each representing a type of ion. The columns will contain the masses at which the particular type of ion was found, if at all.
- **Charge list box (unlabeled):** Each type of ion can be added up to 4 times, depending on the charge we specify.
- **Add with charge button:** After selecting an ion type from the Ion Types list and a charge from the list box, clicking this button will add that ion to the Ion Table Columns list.

**The Protein Identification Result Window is used to examine the results of a *de novo* guided database search. It presents the proteins that are, most likely, found in the sample.**

## Protein Identification Result Window

The screenshot shows a window titled "CytC-ESLanz" with a "Protein Candidates" list at the top. Two candidates are listed: "ncbi(0.1 0.1 Trypsin with Cam)" and "Swiss-Prot(0.1 0.1 Trypsin with Cam)". The "Swiss-Prot" candidate is selected. Below this, the "Result from database Swiss-Prot(0.1 0.1 Trypsin with Cam)" is displayed. It includes a table with columns: Accession, Mass, Score, Coverage, and Description. Two entries are shown: CYC\_BOV (Cytochrome c) and GNA11\_C (Guanine nucleotide-binding protein, alpha-11 subunit (Fragment)). Below the table, there are two sections: one for CYC\_BOV and one for GNA11\_C. Each section shows the mass, score, and coverage, followed by a table of peptide matches with columns: Mz, Charge, Mr(calc), Start, End, Score, and Peptide. The CYC\_BOV section shows several peptide matches, including EDLIAYLK, TGPNLHGLFGR, IFVQK, YIPGTK, TGQAPGFSYTDANK, MIFAGIK, and KTGQAPGFSYTDANK. The GNA11\_C section shows one peptide match: VDVEK. Links for "[Return to top]" and "[Show missed de novo results]" are also present.

Protein Candidates

- ncbi(0.1 0.1 Trypsin with Cam)
- Swiss-Prot(0.1 0.1 Trypsin with Cam)

Result from database Swiss-Prot(0.1 0.1 Trypsin with Cam)

Accession	Mass	Score	Coverage	Description
CYC_BOV <a href="#">more</a>	11547.01	99.36%	50%	>CYC_BOVIN (P62894) Cytochrome c
GNA11_C <a href="#">more</a>	23099.809	30.34%	2.53%	>GNA11_CANFA (P52206) Guanine nucleotide-binding protein, alpha-11 subunit (Fragment)

CYC\_BOV [more](#)... >CYC\_BOVIN (P62894) Cytochrome c  
 Mass:11547.01 Score:99.36% Coverage:50% [[Show missed de novo results](#)]

Mz	Charge	Mr(calc)	Start	End	Score	Peptide
482.7	2	945.5171	92	99	99%	EDLIAYLK
584.8	2	1149.6042	28	38	99%	TGPNLHGLFGR
634.4	1	615.3744	9	13	96.04%	IFVQK
678.3	1	659.36426	74	79	99%	YIPGTK
728.8	2	1437.6525	40	53	99%	TGQAPGFSYTDANK
779.4	1	760.43054	80	86	71.13%	MIFAGIK
792.9	2	1565.7474	39	53	90.94%	KTGQAPGFSYTDANK

[[Return to top](#)]

GNA11\_C [more](#)... >GNA11\_CANFA (P52206) Guanine nucleotide-binding protein, alpha-11 subunit (Fragment)  
 Mass:23099.809 Score:30.34% Coverage:2.53% [[Show missed de novo results](#)]

Mz	Charge	Mr(calc)	Start	End	Score	Peptide
589.3	1	570.30133	73	77	83.59%	VDVEK

[[Return to top](#)]

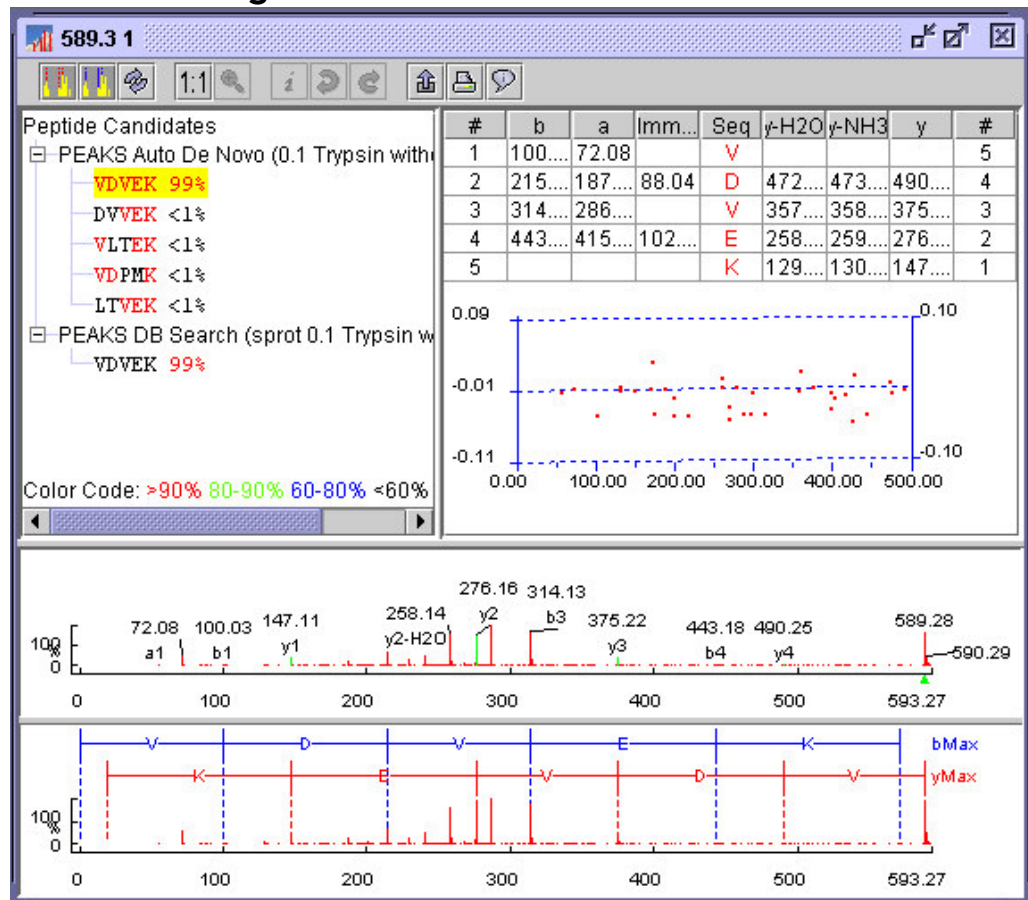
- **Database Frame (top):** If we chose to search through more than one database (or with different sets of parameters) to identify the protein, our search results will be slightly different in each database. Selecting a database (and parameters) from the list will display the protein candidates returned from that database (and parameters). Those search results will be displayed in the Search Result Report frame below. In the example above, the database “Swiss-Prot” is selected with 0.1 error tolerance, and “Trypsin without PTMs” as the Enzyme/PTMs set.
- **Search Result Report Frame (bottom):** Displays the results of the *de novo* guided database search. It is divided into two parts. The index and the peptide match report.
  - **Index (top section):** PEAKS presents a list of proteins that it believes to be the best match for the sample. This index lists them by accession number, ranked in descending order by score. *Very similar proteins (i.e. ones that contain most of or all of the sequences identified by PEAKS) are grouped together – only the first entry in this group is shown*

here. Access the whole group by clicking the [More...](#) hyperlink. In the example above, CYC\_BOV is the top ranked protein candidate.

- **Peptide Match Reports (bottom section):** PEAKS presents each protein candidate with a peptide match list beneath it. Each peptide that matched the protein sequence is shown, in order, by spectrum. The confidence that the correct peptide sequence was found is displayed next to each peptide sequence.

## Main Processing Window

The main processing window is used to perform manual *de novo* sequencing, and to examine the results of auto *de novo* sequencing



- **Main Processing Window Toolbar:** quick access to many processing functions. See “Toolbars” section below.
- **Peptide Candidates Frame (top left):** PEAKS shows peptide sequence candidates, ranked by score for the selected spectrum. Peptide sequences are grouped by the headings: “Auto *de novo*”, “Manual *de novo*”, “user defined result type” and “database search results” depending on how they were derived. For *de novo* results, positional confidence is color coded on each residue. More specific

positional confidence appears when the mouse is held over a sequence – this shows the confidence in each of its parts.

**The ions displayed in both modes can be edited. See the section in configuring PEAKS Studio 3.0**

- **Ion Table Frame (top right):** the Ion Table shows the proposed ions with their corresponding masses -- i.e. the mass of the b1 ion is shown in the top right corner. The default Ion Table will display b, a, immonium, yH2O, yNH3 and y ions in basic mode; it will display b, b-H2O, a, c, immonium, y, y-H2O, z, z' and y(2+) ions in advanced mode. To switch from basic mode to advanced mode, choose 'Show ion table' from the 'View' menu.

The Ion Table Frame also contains an error plot (*it may be necessary to scroll down to see the error plot*). The error plot shows the confidence each ion is assigned. The most confident results lie on the centerline. Clicking a cell or column in the Ion Table highlights the corresponding points on the error plot and corresponding PEAKS on the spectrum.

- **Spectrum View Frame (middle):** Shows a graphical representation of the spectrum. Peak masses are labeled, as are the peaks associated with identified ions. You can zoom in on the spectrum by clicking and dragging over an area.
- **Spectrum Alignment Frame (bottom):** Shows a graphical representation of the spectrum. This view always shows the whole spectrum and is used as a tool to help us navigate the spectrum view frame. A blue bar along the horizontal axis of the alignment view indicates the range of the spectrum view in the Spectrum View Frame.

**To switch views, choose 'Alignment by' from the 'View menu'**


The Spectrum Alignment Frame can also the positions of major ions that delimit the proposed sequence. By default, the Spectrum Alignment Frame displays b-ion and y-ion peaks and the derived peptide sequence between them. The Spectrum Alignment Frame can also show the position of c-ion and z-ion peaks.

**The Ion Editor is used when performing manual *de novo* sequencing.**

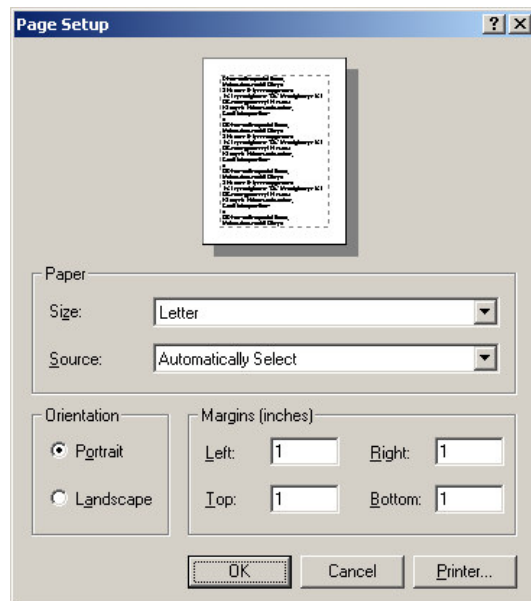
## Ion Editor

- **Selected peak information:** displays information about the currently selected peak.
- Under “**Please choose ion type**”, the radio buttons set whether the ions in the “ion choice list” are C terminal ions or N terminal ions.
- **Ion choice list: (left):** lists the ions we can apply to the selected peak
- **Selected ion list (right):** lists the ions we have selected add or remove them using the “Add” and “Remove” buttons.
- **Apply button:** applies the ions in the “selected ion list” to the selected peak.

## Export Image Dialogue

- **Width and Height:** together these determine the size of the output image (measured in pixels).
- **Format:** select an image file format from the drop down list. Bitmap, JPEG and Graphics Interchange Format are supported
- **Filename:** type in the textbox, or browse to a file , to enter the file name of the image that will be created.
- **Export selected area:** the default image output is the full spectrum as shown in the spectrum alignment frame, checking this box will allow us to print one of the other items. For example, if we have zoomed in on a portion of the spectrum and wish to print that zoomed in view, we click the export button and select the “Export selected area” checkbox, then the “current spectrum window” radio button.

## Print Image Dialogue



- **Orientation:** paper orientation is shown in the picture at the top. Change this by clicking the “Portrait” or “Landscape” radio buttons.
- **Paper:** Set the paper size and source by selecting from the appropriate dropdown list.
- **“Printer” button:** pressing this will bring up another dialogue where we can select from a list of printers installed on our machine.
- **“Ok” button:** this will commence printing.

The default print output is the full spectrum as shown in the spectrum alignment frame. If we wish to print something else, we must use the export image functions and then print the image from another application.

## Toolbars

### Main window toolbar



**"Open data file"** button: This allows us to open a raw data file built by our mass spectrometer, or a PEAKS data file (in ANZ format) that also contains peptide analysis data. The file should be in PKL, DTA, MGF or ANZ format.



**"Close data file"** button: Close the selected data file. Press this after selecting a data file in the Peptide Data Frame.



**"Save data file"** button: Save any changes made to the file (a '\*' will appear next to any file that has been changed). The file will be saved in the ANZ format. Press this after selecting a data file in the Peptide Data Frame.



**"Save all files"** button: Save all files. Any changes to files will be saved in the ANZ format.



**“Copy” button:** Copy selected spectrum data.



**“Cut” button:** Cut selected spectrum data.



**“Paste” button:** Paste spectrum data into the selected data file.



**"Automatic *De novo*" button:** perform auto *de novo* for a selected data file, spectrum or list of data files. Press this after selecting one or more data files (or spectra) in the Peptide Data Frame. An auto *de novo* options dialogue will allow us to set parameters before we begin.



**"Protein Identification" button:** perform protein identification a selected data file. Press this after selecting one or more data files (or spectra) in the Peptide Data Frame. A protein identification options dialogue will allow us to set parameters before we begin.



**"Environment Preference Configuration" button:** configure the environment, spectrum color-coding, auto *de novo* parameters and manual *de novo* parameters.



**“PEAKS Properties Configuration” button:** define PTM/ENZYME sets, PTM, and add FASTA protein or EST databases.



**“Import Database Wizard” button:** help user download and configure database.

## Main Processing Window Toolbar



**“y ion Alignment” button:** toggle (show/hide) the location of PEAKS corresponding to y-ions and the corresponding proposed peptides between them.



**“b ion Alignment” button:** button: toggle (show/hide) the location of PEAKS corresponding to b-ions and the corresponding proposed peptides between them.



**“Deconvolve” button:** toggle (on/off) deconvolution of the mass spectrum scale.



**“1:1 zoom” button:** return spectrum to original 1:1 zoom.



**“Undo Zoom”** button: return to previous zoom ratio.



**“Edit Ion”** button: set or edit the type of ion associated with a peak in manual *de novo*. Press this button after having selected a peak in the spectrum view frame.



**“Next Peptide”** button: redo changes to the peptide in manual *de novo*.



**“Previous Peptide”** button: undo changes to the peptide in manual *de novo*.



**“Export Results”** button: export the spectrum view, ion table, or to a picture (bmp, gif, or jpg format) with ions, masses, PEAKS and peptides marked.



**“Print Results”** button: print the spectrum view with ions, masses, PEAKS and peptides marked.



**“View Results”** button: show, in HTML format: the spectrum view with ions, masses, PEAKS and peptides marked; peptides and confidence scores; the ion table; and the error plot.

## PEAKS Studio Configuration


*How to set up PEAKS Studio just the way we like it.*

This chapter deals with configuration. PEAKS Studio 3.0 is a versatile and flexible tool. But in order to use the software to its full extent, we must learn how to configure it to make it do what we want it to. Additionally, PEAKS Studio 3.0 allows us to set up many defaults and presets to help us be quick and precise.

We can use PEAKS Studio 3.0 without the need to configure; default settings will be used. However, to increase efficiency we should set environmental preferences, and PEAKS properties. This will enable us to customize the tool to our requirements. It is recommended that we configure PEAKS Studio 3.0 before processing data files.

### PEAKS Properties Configuration

One of PEAKS Studio 3.0 preferences, PEAKS Properties configuration sets the parameters that the algorithm will use in processing our data files. PEAKS properties include: PTM, Enzyme/PTMs set and database. PEAKS Studio 3.0 provides tools to edit PEAKS properties for convenient use in *de novo* sequencing and protein identification. To edit PEAKS Properties:

- Click the  icon in the main window toolbar;
- Or, from the “Edit” menu, select “Configuration” then “PEAKS Properties”
- Or, Click the “Edit PEAKS Properties” button in the Protein Identification (or Auto *De novo* Options) dialogue that appears before each Protein Identification (or auto *de novo*) operation.

The PEAKS Properties dialogue will then appear. This dialogue box has three tabs: “**Enzyme/PTMs Set**”, “**PTM**” and “**Database**”. Clicking a tab will allow us to edit

---

the PEAKS Properties corresponding to that tab. We can also **import** or **export** our preferences to/from a file.

## Enzyme/PTMs Set editor

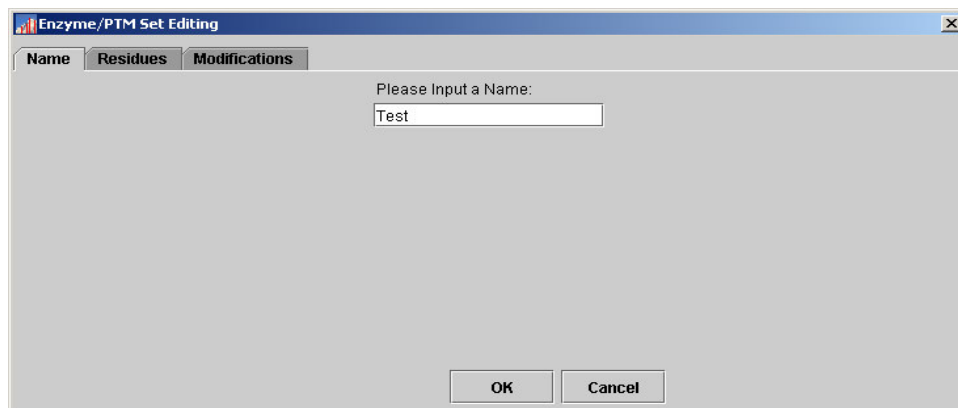
Enzyme and PTMs are enzyme information and post-translational modification information, respectively. The Enzyme/PTMs set is the combination of ENZYME and PTM that we used in our experiment/sample. If we select an Enzyme/PTM set when we run auto *de novo* or protein ID, Peaks will look for those PTMs in sequence and return only peptides corresponding to the digest. For example, if we select 'Trypsin with Cam' as our set, Peaks will look for Carbamidomethylation on Cysteine.

To see a list of Enzyme/PTMs sets, select the corresponding tab in PEAKS Properties editor. From here we can create a new Enzyme/PTMs set, remove non-built-in Enzyme/PTMs sets, edit non-built-in Enzyme/PTMs sets and view the configuration of selected Enzyme/PTMs set. The sections below describe how to perform these operations.

PEAKS Properties editor will show all existing Enzyme/PTMs sets in the list. There are two types of Enzyme/PTMs sets: <built-in> sets and user defined sets. PEAKS software contains three built-in Enzyme/PTMs sets: 'Trypsin with Cam', 'Trypsin without PTMs' and 'Unknown Enzyme without PTMs'. These built in sets cannot be removed or edited by user. They cannot be overwritten, even if we try to create a new Enzyme/PTMs set with the name of built-in set. User defined sets can be removed, edited or overwritten at any time.

### Creating a new Enzyme/PTMs set

To create a new Enzyme/PTMs set, we open the PEAKS Properties dialogue, ensure that the 'Enzyme/PTM' set tab is selected and click the "New" button. The Enzyme/PTM Editing dialogue will appear. Click the "Cancel" button at any time to exit, discarding changes.



From the Name tab, we must enter a name for our new Enzyme/PTMs set. This is for our reference only, but it makes sense to enter a name that will remind us of the

enzyme information and PTM that we are to enter (in the above example we've simply entered 'Test'). *When clicking the Finish button after entering only a name, our Enzyme/PTMs set will be created using 'Trypsin' as the enzyme information and 'no PTM' as the PTM information.*

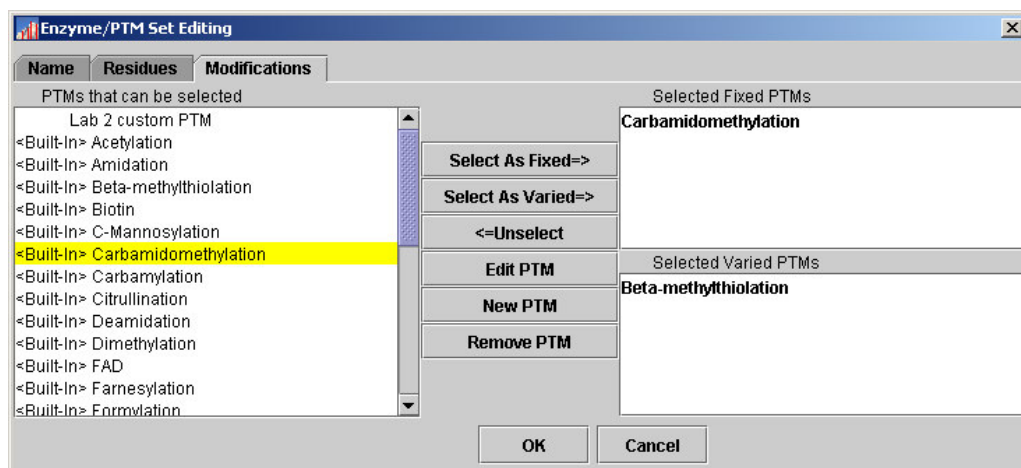
Clicking on the Residues tab brings up the following screen:

**The checkboxes here represent the possible digestion products.**

Here we can enter enzyme information into our set. We can choose pre-defined enzyme from the drop-down list. Based on the digestion properties of the enzyme, the residues that are likely to be found at the N-terminus, C-terminus and in the middle of the digestion product are marked with checkboxes (the check appearing to the left of each letter symbol.) If the residue positions are not quite right for our enzyme we can customize residues for different positions by selecting appropriate checkboxes (the original definition of the enzyme will not be overwritten). Alternatively, we can choose 'Unknown Enzyme' from the dropdown list to define a new enzyme from scratch. *If we click the "Finish" button without specifying PTM, PEAKS will assume that we do not wish to specify any PTM:*

To specify PTM to search for, click the Modification tab. This brings up the following screen:

**Selecting a PTM as fixed tells PEAKS that the PTM will occur in all instances. Selecting a PTM as Varied tells PEAKS that it may or may not occur.**

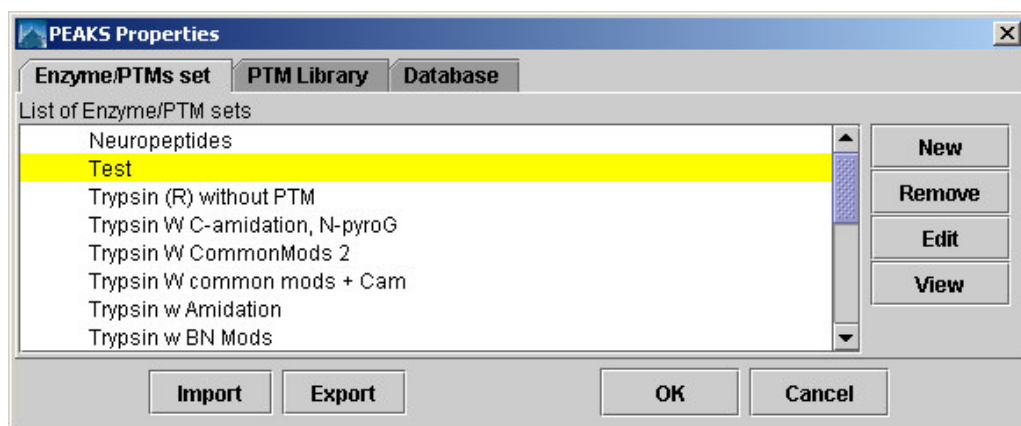


Here we can from a list of available post-translational modifications. We can choose any PTM as Fixed PTM or Varied PTM (to tell PEAKS that it may or may not occur). To make this selection, click on a PTM in the list at left, and then click the “Select As Fixed=>” or the “Select as Varied=>” button. If a PTM is already selected as a fixed PTM, it cannot be selected as varied PTM, and vice versa.

If we change our mind about a PTM after having selected it, it is still possible to unselect it. Click the erroneous PTM from the list of ‘Selected Fixed PTM’ or ‘Selected Varied PTM’, and then click the “<=Unselect” button to remove it from either list of Selected PTM.

PEAKS software ships with some pre-defined PTMs. These are listed as <Built-In>. If we want to create a new PTM, we can click ‘New PTM’ to create a new one. The **Editing a PTM** and **Creating a New PTM** sections below describes how this is done.

After having built our Enzyme/PTMs set, we can click the “Finish” button to save the new Enzyme/PTMs set, or the “Cancel” button to exit, discarding changes. *If we click the “Finish” button without specifying residues, PEAKS will assume that this is a tryptic digest, and apply the appropriate residues.* After clicking the “Finish” button we return to the PEAKS Properties dialogue to find that our new Enzyme/PTMs set is listed in the ‘List of Enzyme/PTM sets’.

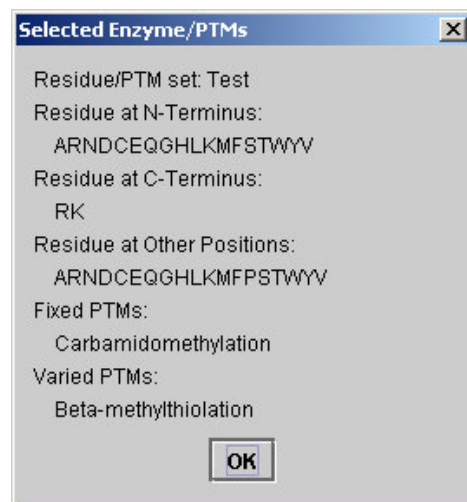


### Editing an Enzyme/PTMs set

To edit an existing Enzyme/PTMs set, we open the PEAKS Properties dialogue and ensure that the 'Enzyme/PTM' set tab is selected. Choose a user defined Enzyme/PTMs set from the list and click the "Edit" button. *We cannot edit the built-in Enzyme/PTMs sets.* The Enzyme/PTM Editing dialogue will appear. We now follow the same procedure as we would if we were creating a new Enzyme/PTMs set (see above section).

### Viewing an Enzyme/PTMs set

To view the configuration of an existing Enzyme/PTMs set, we open the PEAKS Properties dialogue and ensure that the 'Enzyme/PTM' set tab is selected. Choose an Enzyme/PTMs set from the list and click the "View" button. This presents us with a summary of the selected Enzyme/PTMs set, including enzyme and PTM information. Click the "Ok" button when finished. We cannot edit the selected Enzyme/PTMs set from this screen.



### Removing an Enzyme/PTMs set

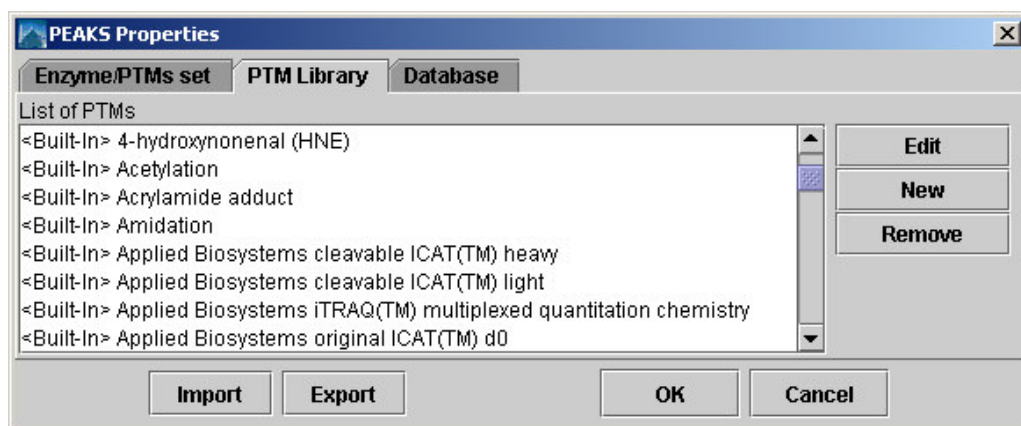
To remove a user defined Enzyme/PTMs set, we open the PEAKS Properties dialogue and ensure that the 'Enzyme/PTM' set tab is selected. Choose a user defined Enzyme/PTMs set from the list and click the "Remove" button. *Built in Enzyme/PTMs sets cannot be removed.*

## PTM Editor

If we know that our sample protein may have been modified since translation, we need to apply this information to our analysis. This is done by creating an Enzyme/PTMs set which incorporates enzyme information and PTM information (see above section).

**PTM Post  
Translational  
Modifications  
affect the mass of  
modified proteins  
and residues**

To edit the list of PTM available to PEAKS Studio through these sets we use the PTM Editor. To select PTM editor, click the tab 'PTM Library' in PEAKS Properties editor.



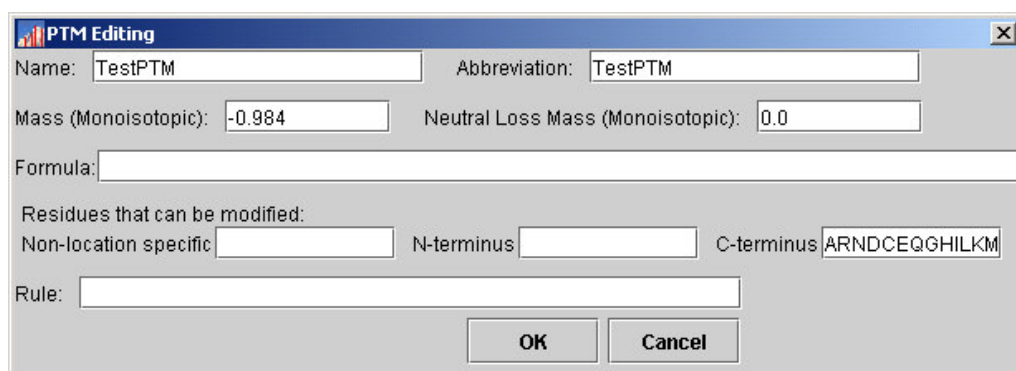
All PTM are listed here. There are two types of PTM available to PEAKS: <built-in> PTM and user defined PTM. From here, we can create a new PTM, edit an existing PTM or remove a PTM from the list. See the sections below for help with these operations. *Built-in PTM cannot be removed from the list, but can be edited.*

#### **Editing a Built in PTM**

It is possible to modify a built in PTM. PEAKS will save the modification and treat this PTM as a customized PTM. It will temporarily overwrite the built-in PTM - we will not be able to see the original, built-in, PTM until we remove the customized one. We can remove this customized PTM at any time and the built-in PTM will reappear.

#### **Creating a New PTM**

To create a new PTM, we open the PEAKS Properties dialogue, ensure that the 'PTM' tab is selected and click the 'new' button. *To create a new PTM 'on the fly' while making an Enzyme/PTMs set, click the "new PTM" button while selecting PTMs.* The PTM Editing dialogue will appear:



The PTM Editing dialog box contains the following fields and buttons:

- Name:** TestPTM
- Abbreviation:** TestPTM
- Mass (Monoisotopic):** -0.984
- Neutral Loss Mass (Monoisotopic):** 0.0
- Formula:** (empty text box)
- Residues that can be modified:**
  - Non-location specific:** (empty text box)
  - N-terminus:** (empty text box)
  - C-terminus:** ARNDCEQGHILKM
- Rule:** (empty text box)
- Buttons:** OK, Cancel

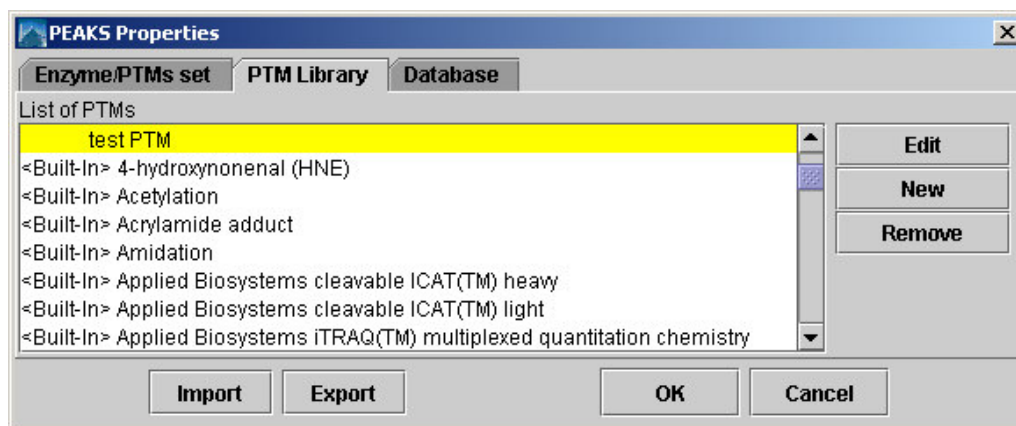
Figure 1 Create new PTM

Now we type information pertaining to our PTM in the appropriate boxes (see above section on **Interface** for a more in depth explanation of these fields). At a minimum, we must enter a name, a mass and one residue that may be modified.

Enter the mass of the modification either by typing in its monoisotopic mass difference directly, or by entering its empirical formula. It is unnecessary to do both; each will override the other.

Click the “Ok” button to save changes and create our new PTM, or click the “Cancel” button to exit, discarding changes.

After clicking the “Ok” button we return to the PEAKS Properties dialogue to find that our new PTM is listed at the top of the PTMs list.



The PEAKS Properties dialog box shows the PTM Library tab with the following content:

- Enzyme/PTMs set** | **PTM Library** | **Database**
- List of PTMs**
  - test PTM (highlighted)
  - <Built-In> 4-hydroxynonenal (HNE)
  - <Built-In> Acetylation
  - <Built-In> Acrylamide adduct
  - <Built-In> Amidation
  - <Built-In> Applied Biosystems cleavable ICAT(TM) heavy
  - <Built-In> Applied Biosystems cleavable ICAT(TM) light
  - <Built-In> Applied Biosystems iTRAQ(TM) multiplexed quantitation chemistry
- Buttons:** Edit, New, Remove, Import, Export, OK, Cancel

### Editing a PTM

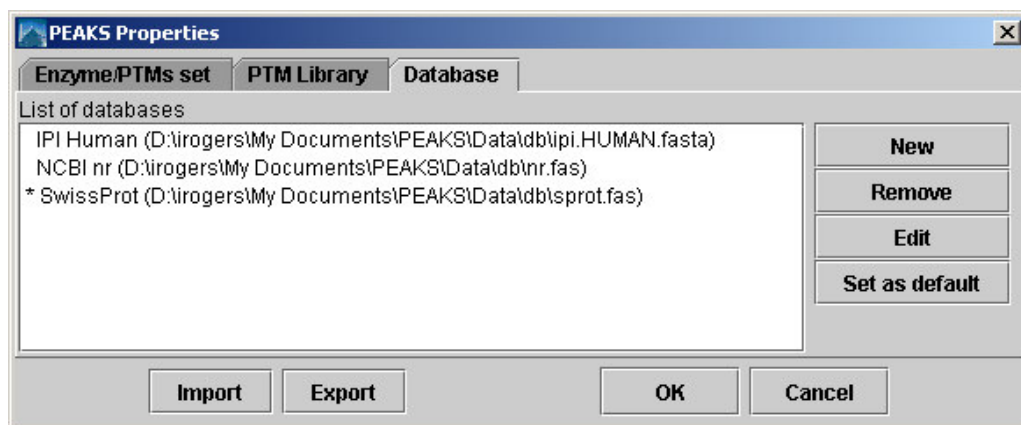
To edit a PTM, we open the PEAKS Properties dialogue, ensure that the ‘PTM’ tab is selected, and select a PTM from the list by clicking on it and click the ‘Edit’ button. *To edit a PTM ‘on the fly’ while making an Enzyme/PTMs set, click the “edit PTM” button while selecting PTMs.* The PTM Editing dialogue will appear. Now we follow the same procedure (see above) as we would if creating a new PTM.

### Removing a PTM

To remove a PTM, we open the PEAKS Properties dialogue, ensure that the 'PTM' tab is selected, select a PTM from the list by clicking on it, and click the 'Remove' button. *To remove a PTM 'on the fly' while making an Enzyme/PTMs set, click the "edit PTM" button while selecting PTMs.* Built in PTM cannot be removed.

### Database Manager

PEAKS Studio 3.0 needs a protein or EST database (in FASTA format) to identify protein candidates. Since databases are being constantly updated, PEAKS does not ship with a protein or EST database. Thus, we need to download it from the Internet and tell PEAKS where the database is located. PEAKS provides the Database manager as a tool to help us do this. To see a list of databases available to PEAKS Studio 3.0, load the PEAKS Properties dialogue and click the 'Database' tab. From here we can edit a database's properties, load a new database, or remove a database.



### Load/Configure a new database

*For an in depth look at configuring a database, see the Database Configuration section in Chapter 2.*

To configure a new database, we open the PEAKS Properties dialogue, ensure that the 'Database' tab is selected and press the "New" button. Now we open up our web browser to find a database to download. Find one, download it, and unpack it. Return to PEAKS Studio 3.0 and find the file on our system where we unpacked it. Name the database and select the header format to use (or we can define our own). Click "Ok". The new database will now appear, listed by our chosen name, in the list of databases.

### Remove a Database

To remove a database, we open the PEAKS Properties dialogue, ensure that the 'Database' tab is selected, select a database from the list of databases, and press the "Remove" button. This will not permanently remove it from our system, it may be reloaded (follow procedure for configuring a new database) at any time.

**We can't edit the database itself from within PEAKS Studio 3.0.**

### Edit a Database

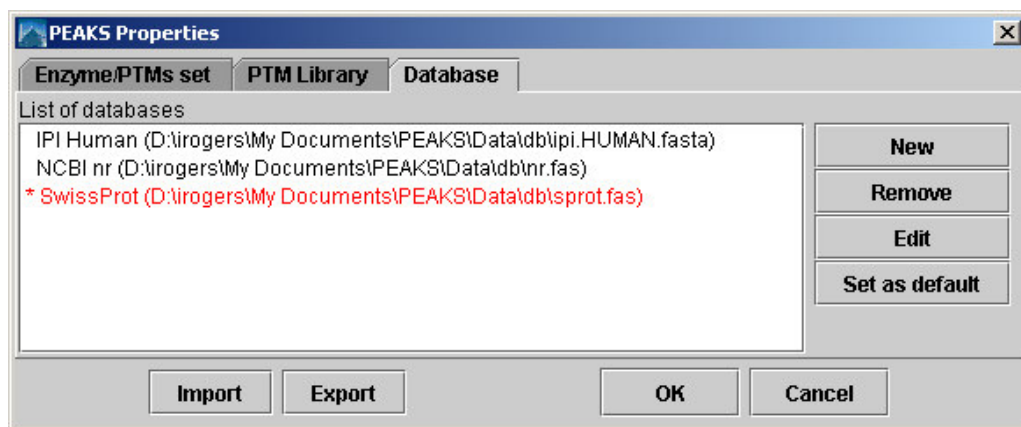
This tool allows us to change the name that PEAKS Studio 3.0 associates with a database, and the header parsing rules for that database. To edit a database, we open the PEAKS Properties dialogue, ensure that the 'Database' tab is selected, select a database from the list of databases, and press the "Edit" button.

### Set the Default Database

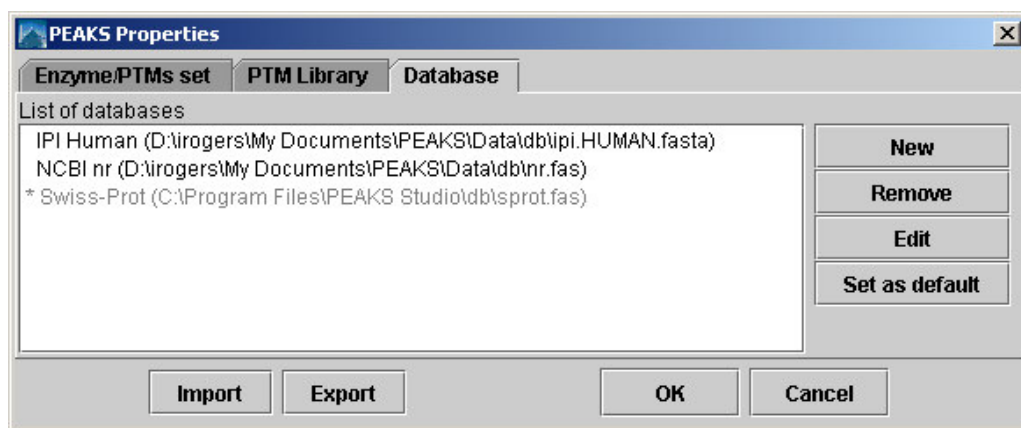
Setting the default database changes the database that the protein identification search will use by default. You will still be able to select another database before doing the search if we so choose. To edit a database, we open the PEAKS Properties dialogue, ensure that the 'Database' tab is selected, select a database from the list of databases, and press the "Set as default" button. The default database is marked with a \* before its name in the list of databases.

### Moving/Updating a Database

If we choose to move a database to another directory, or delete it entirely, we should tell PEAKS. We must remove the database from the list and re-load it. Until we do so, the database name will appear in red in the list of databases, and any protein identification using that database will fail.



If we choose to update the database [perhaps by downloading the latest database file and overwriting the old database file], PEAKS will show the database information in light gray. *A light grey colour could also mean that the database does not have header information.*



## Importing and Exporting PEAKS Properties

We may wish to use PEAKS Studio 3.0 on another system. However, if we have a large number of user defined PTM and Enzyme/PTMs sets it could take a great deal of our time to re-input those. This is where importing and exporting of PEAKS properties is useful.

The export function will save PEAKS Properties information in a XML file. The import function can read a PEAKS properties XML file and overwrite local PEAKS Properties with the information from XML file. If we wish to use our PEAKS properties on a colleague's system, we must remember to export our colleague's properties to a separate file so that it will not be lost and can be imported later.

### A note on sharing sequences with PTM

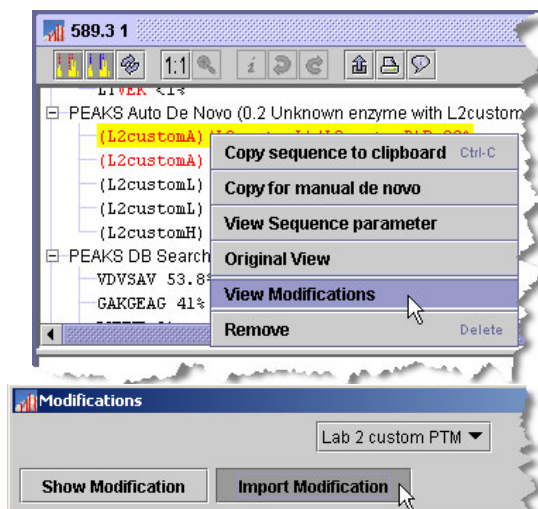
Sequence data and protein identification results for a given spectrum are stored in an .ANZ file. Any modifications that were found in the sequence are also included. As such, user-defined modifications will still show up if the file is viewed on another machine. It is not necessary to import all PEAKS properties to view these modifications. Also, user-defined modifications can be extracted from an .ANZ file and added to the local PEAKS properties.

**To export PEAKS properties to a file**, open the PEAKS Properties dialogue and press the "Export" button. Type in a file name and press the "Save" button.

**To import PEAKS properties from an file**, open the PEAKS Properties dialogue and press the "Import" button. Select a file or type in a file name and press the "Open" button. This must be a PEAKS configuration file in XML format.

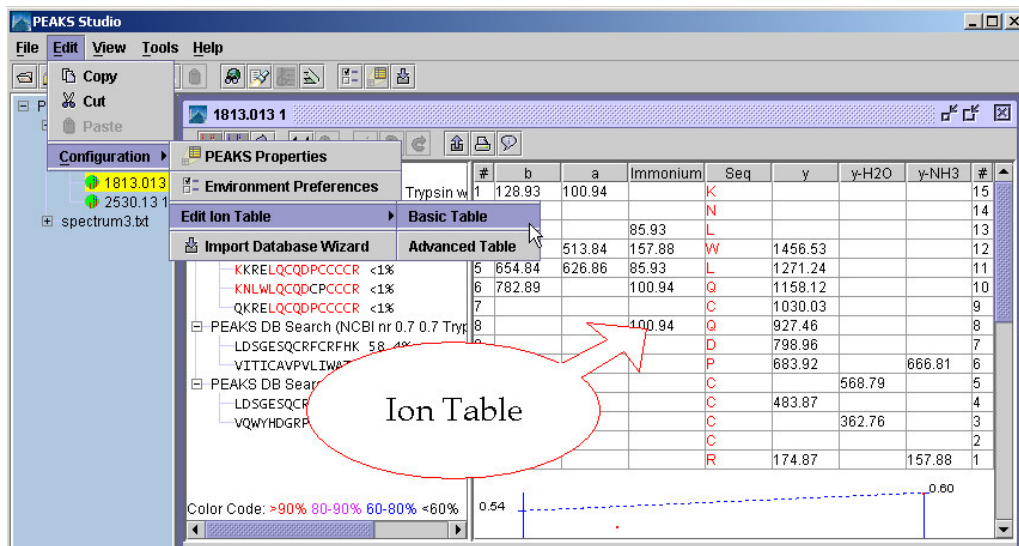
**To save user defined PTM to an .ANZ file for sharing,** we simply save our work to an .ANZ file as normal. Any user defined PTM will be preserved in the .ANZ file.

**To import a user defined PTM from another user's .ANZ file,** we open the .ANZ file and find a sequence containing the user defined modification. Right click on that sequence to bring up the popup menu. Click the “View Modifications” menu item. This brings up a dialogue box named “Modifications”. Select the PTM of interest from the dropdown list (in this example: ‘Lab 2 custom PTM’) and click the import modification button.



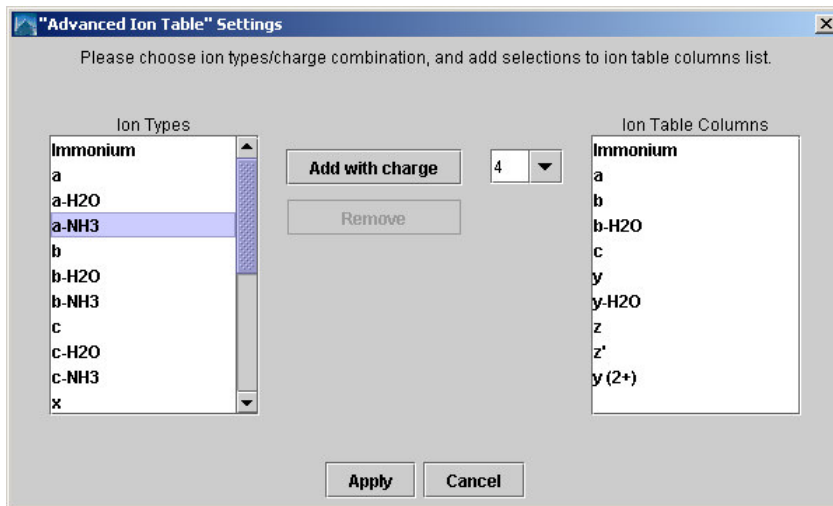
## Configuring the ion table

The ion table, displayed in the top right of the main processing window, displays all the ions that were found as evidence for the selected sequence. There are two presets: the Basic Table and the Advanced Table. Select which one to display by choosing “Show Ion Table ►” from the “View” menu.



The Basic Table will display a maximum of 6 ions. The Advanced Table can be configured to display as many as are available. To configure the ion table, choose “Edit menu” → “configuration” → “edit ion table” and then select which table you’d like to edit.

The Ion Table Settings dialogue box will appear:



The ions types that will be displayed in the ion table are shown on the right. The complete list of ion types available is shown on the left. To add an ion type to the ion table (i.e. add a column to the ion table):


1. Select one or more ions from the list on the left. Use Shift+click and Ctrl+click to select multiple list items.
2. Select a charge (from 1-4) from the drop down list in the middle.
3. Click the 'Add with charge' button

For example, configure the ion table to display  $y^{2+}$  ions by selecting 'y' from the list on the left, and '2' from the dropdown charge list.

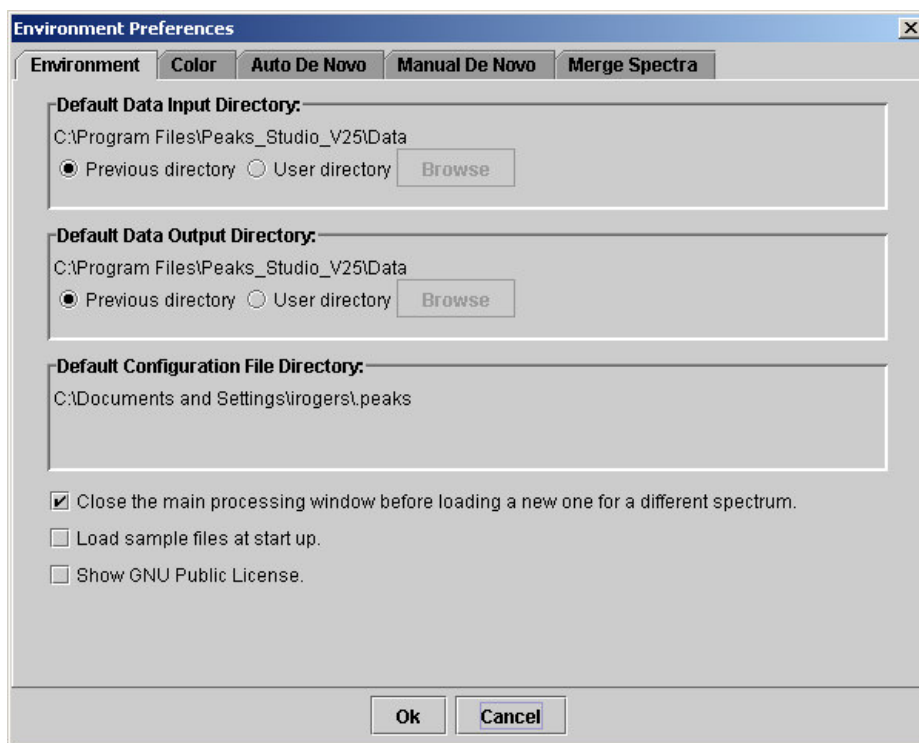
Remove ion types from the ion table (i.e. remove columns from the table) by selecting one or more items in the list on the right, and clicking the 'Remove' button.

## PEAKS Environment Preference Configuration

One of PEAKS Studio 3.0 preferences, PEAKS Environmental Preference allows us to customize PEAKS Studio 3.0 to our needs. PEAKS Environmental Preferences include: Environment, Color, *Auto de novo*, and *Manual de novo*. **To edit PEAKS Studio 3.0 Environment Preferences:**

- Click the  icon in the toolbar;
- Or, from the "Edit" menu, select "Configuration" then "Environment Preference"

The Environment Preferences dialogue will then appear. This dialogue box has four tabs: **'Environment'**, **'Color'**, **'Auto de novo'**, **'Manual de novo'** and **'Merge Spectra'**. Clicking a tab will allow us to edit the Environmental Preferences corresponding to that tab.



## Environment

To change the working environment, we open the Environment Preferences dialogue and ensure that the “Environment” tab is selected.

We can change the environment settings so that, when we are browsing our system to find or save data files, PEAKS always starts looking in the folder we specify. The current working folders for data input and data output are shown. We can choose to have PEAKS Studio 3.0 use the last folder we loaded from (saved to) as the current working folder, or toggle the appropriate radio button to “User directory” to set it ourselves so that it will be the same each time.

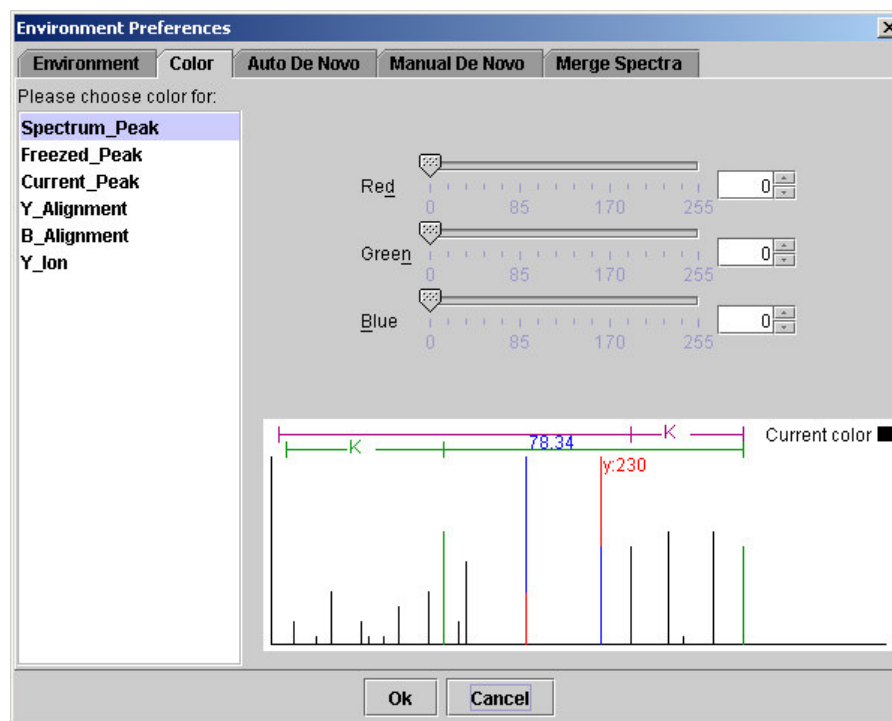
The directory where PEAKS stores its preferences information cannot be changed in this version of PEAKS.

Additionally, we can choose whether or not we’d like PEAKS to close a spectrum view window once we have finished with it and move on to another spectrum. Click the checkbox at the bottom of the window.

Once we’ve chosen from these options, pressing the “Ok” button will exit, saving changes. The “Cancel” button will exit discarding changes.

## Colors

For ease of viewing, we can choose which colors we would like to represent which items on the spectrum view. To change the color of an object on the spectrum, we open the Environment Preferences dialogue and ensure that the ‘Color’ tab is selected.



Choose the object whose color we'd like to change from the list at the left. Then we click on the slider bar, type in a number (0 to 255) in the textbox, or scroll up and down on the arrows next to the textbox to select how much of the corresponding color we'd like to apply. Choose an amount for all three colors. In the example above, we've chosen pure red (255) to represent a spectrum peak. After we've chosen colors we may click the “Ok” button to exit and save changes.

## Auto de novo

Before performing an auto *de novo* analysis of our spectrum data, we must specify certain parameters to the PEAKS algorithm. These include error tolerance, Enzyme/PTMs set to use, database to search and instrument used. We can do this before each auto *de novo* run, but if we always use the same instrument and the same experimental conditions, we may wish to avoid having to confirm these options every time we perform auto *de novo* sequencing. To do so, check the box next to “use this configuration as default”. These settings will be used for each auto *de novo* sequencing operation, without confirmation.

To set parameters for auto *de novo*, we open the Environment Preferences dialogue and ensure that the ‘Auto *de novo*’ tab is selected. We then select a value for each of the

parameters to use by clicking on the dropdown list and selecting one of the options. Clicking the Residue and PTM dropdown list brings up the list of our defined Enzyme/PTMs. Please refer to the PEAKS Studio 3.0 Interface section for information on what these values mean.

**To see how to change the list of Residue and PTMs, refer to the above section: PEAKS Properties Configuration**

**Environment Preferences**

**Environment** **Color** **Auto De Novo** **Manual De Novo** **Merge Spectra**

Parent mass error tolerance: 0.1

Fragment mass error tolerance: 0.1

Enzyme and PTM: Trypsin with Cam

Report top: 5

Instrument: Quadrupole-TOF

For best results, try error tolerance of 0.1 for data from Quadrupole-TOF


☒ Preprocess before De Novo

☐ Use this configuration as default

Ok Cancel

These values can also be set from the Auto *de novo* options dialogue that appears before each Auto *de novo* operation. Un-checking the box will make the Auto *de novo* options dialogue appear before each auto *de novo* once again.

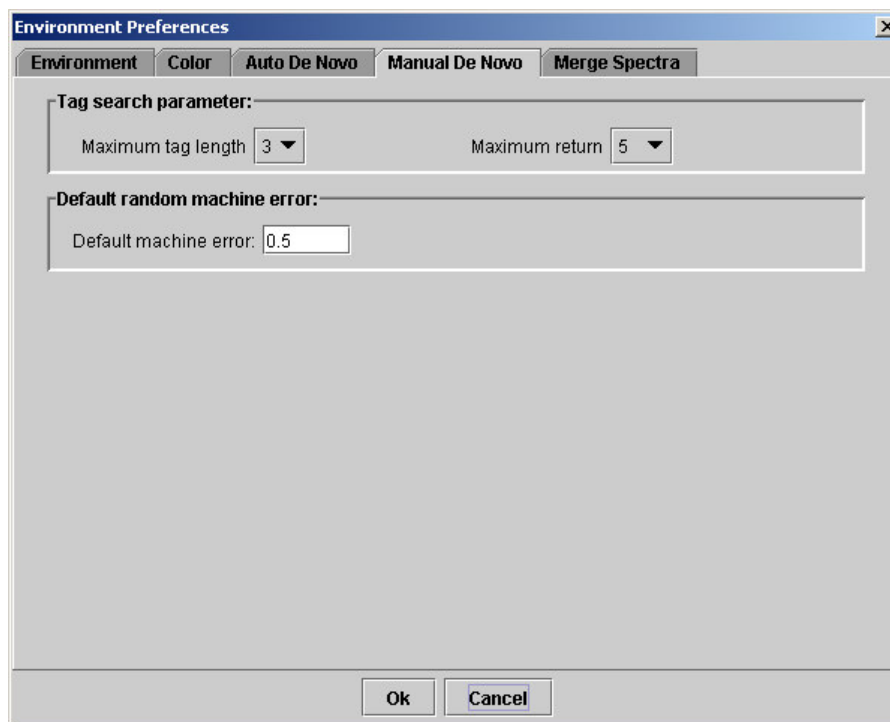
## Protein Identification

Settings for the database search portion of the analysis can only be set immediately before each protein identification operation. That is to say, to set parameters for database search and protein identification, we click on the  Protein Identification button.

## Manual *de novo*

We may wish to sequence a peptide manually, using spectrum data. PEAKS Studio 3.0 provides us with a set of tools to help us do so. We may need to tweak these tools to adjust for error tolerance, and to customize the working environment.

To adjust Manual *de novo* options, open the Environment Preferences dialogue and ensure that the 'Manual *de novo*' tab is selected.



When sequencing a peptide using the manual *de novo* tools, we can get PEAKS to help us by searching to the left or right of a selected peak and returning a set of possible sequence tags (see Manual *De novo* section later in this chapter). We can choose how many search results we'd like to see, and we can choose how long (number of amino acid residues) we'd like these tags to be at a maximum. To choose how long tags will be, we click on the "Maximum tag length" dropdown list box, and making a selection. Choose the number of search results displayed by clicking on the "Maximum return" dropdown list and making a selection.

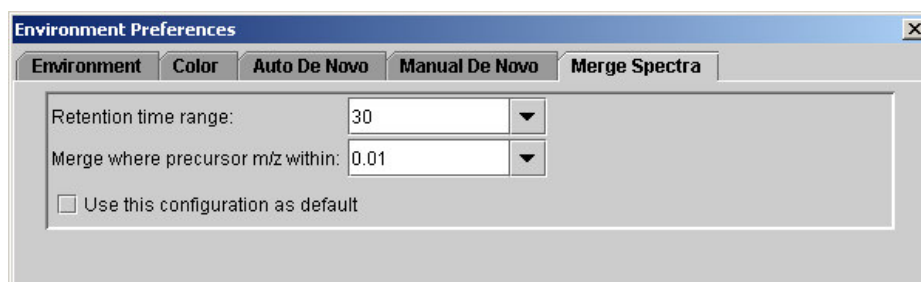
Changing the default machine error sets the amount of error PEAKS will tolerate when tagging a residue. *For example: we have a mass difference of 113.14 between two y-ions that we have labeled. We are fairly confident that this should be tagged L (Leucine, with actual mass of 113.08), but PEAKS is not labeling it for us. This may be because 113.14 is too far out of PEAKS error tolerance for the mass of L.* We can tweak the settings until we get the desired result. To do so, type a value for error (larger numbers indicate greater tolerance) into the "Default machine error" textbox.

After having made all desired changes, click the "Ok" button to save changes and exit the dialogue box. Click the "Cancel" button to exit, discarding changes.

## Merge Spectra

We may wish to merge spectra, representing the same peptide, together. PEAKS Studio 3.0 provides us with a tool to do so. We are usually prompted to merge spectra when a file is opened, but we may set defaults.

To change default settings for merging MS/MS scans of the same peptide, open the Environment Preferences dialogue and ensure that the 'Merge Spectra' tab is selected.



Here we can set which ranges of retention time and mass should be used as criteria for merging spectra together. After having made all desired changes, click the “Ok” button to save changes and exit the dialogue box. Click the “Cancel” button to exit, discarding changes.

## PEAKS Studio Usage

*A task based guide to processing our data with PEAKS Studio 3.0.*

This chapter deals with usage. It is broken up into tasks that a typical user might perform. It assumes we can identify parts of the Graphical User Interface and that we are familiar with how PEAKS Studio 3.0 can be configured. The preceding two chapters provide in depth help on these subjects, and should be used as a reference. Such detail has occasionally been omitted from this chapter in the interest of succinctness.

The three cores of PEAKS technology are the manual de novo sequencing, automatic de novo sequencing and protein identification tools. Help is provided for these tasks, but also, how they may be used to perform less obvious operations.


---

## Loading data into PEAKS Studio 3.0

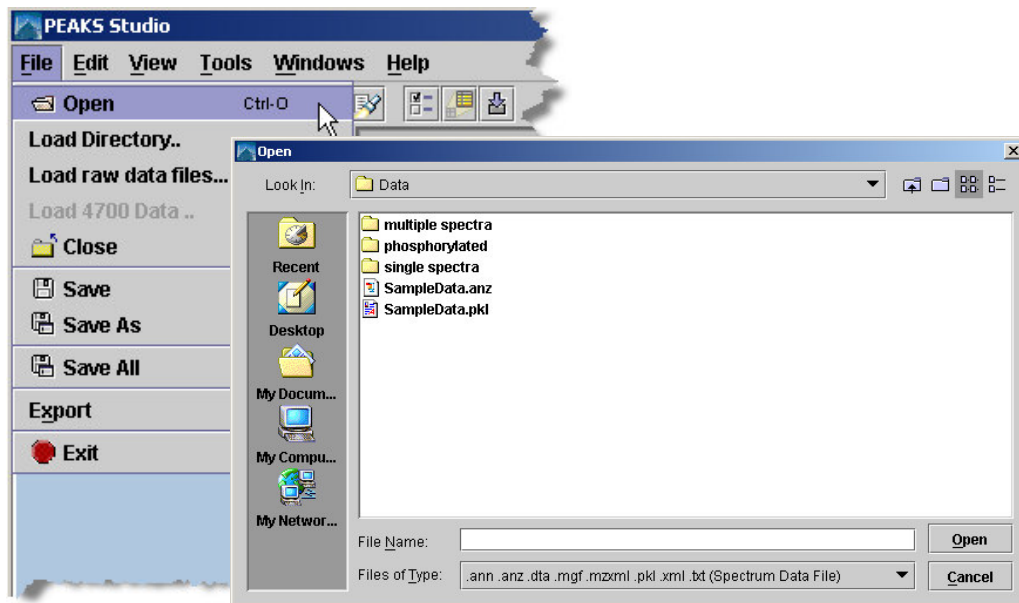
PEAKS Studio 3.0 can be used to process data from any MS/MS instrument, provided the data is accessible, or can be converted to an accessible format. PEAKS handles data files in the following formats:

- PKL
- DTA
- MGF
- ANZ – the zip compressed XML based file format associated with PEAKS
- XML format files from Waters/MicroMass's ProteinLynx software
- RAW files from Waters QTOF instruments
- XML format files using the mzXML schema
- DAT files created by BSP's ABI converter software

### Opening data files

In order to do any data processing we must first load our spectrum data into PEAKS Studio 3.0. To open a data file, click the  icon on the toolbar in the upper left corner of the PEAKS window or select "Open" from the "File" menu.

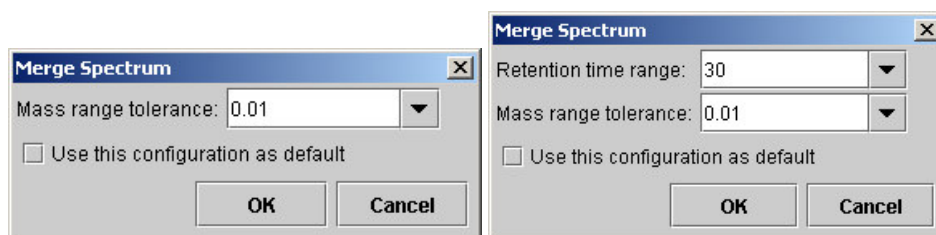
**PEAKS demo data can be found in the DATA sub-directory, located in the PEAKS directory.**



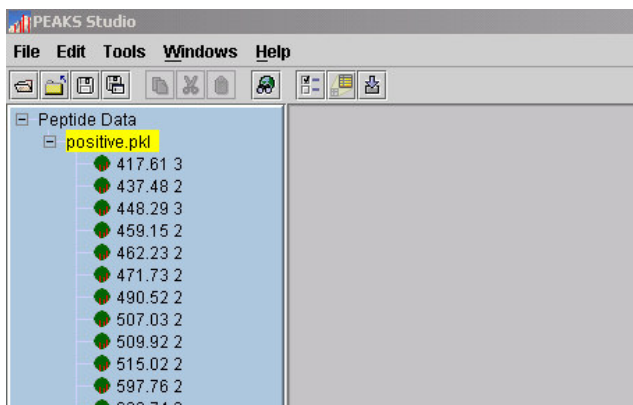
Select a file (in .ANZ, .pkl, .mgf, .dta, or .txt format). Click the Open button.

Usually, PEAKS Studio 3.0 will then ask us if we want to reduce the amount of data to process, and at the same time, improve the data quality, by merging together MS/MS scans of the same peptide. To do so, choose a mass range, and press the OK button. MS/MS spectra whose parent ions are within this mass range of each-other will be merged together. *If the data file also contains retention time information, we can merge spectra whose parent ions' mass and retention time are closer together than the specified mass range and retention time range.*

**If we don't want to merge peaks, we can enter 0.00, or press the Cancel button.**



The data file we just opened appears in the Peptide Data Frame on the left. It is represented by its file name. Each spectrum contained in the data file is represented by its precursor ion information (m/z value followed by the charge of the precursor ion that generated the spectrum).



## Loading a directory full of data files

DTA spectrum data files can be opened by the same procedure as listed above. However, as we know, some DTA files contain the data for only one spectrum. As such, we may find it useful to import a whole directory (containing DTA MS/MS spectrum data files for a whole MS scan) at once, and consider it as one MS scan. PEAKS Studio 3.0 provides a tool for doing so.

Under the “File” menu, click “Load Directory..”. Now browse to the directory we wish to load.



Do not select a file within the directory; rather select the directory itself. Press the Open button.

As above, the Merge Spectra dialogue will appear. Press OK to merge, or Cancel to skip this step.

After loading the spectra, we can choose sort the spectrum by the source filename or by the precursor m/z value of spectrum. To do so, right click the parent node on the Peptide Data, and choose to sort.

## Importing RAW data

PEAKS Studio 3.0 can import RAW data from our Waters/MicroMass QTOF instrument. To do so, we choose “Import RAW data” from the File menu. As above, the file browser appears. Choose the .RAW data, and click the Open button. Again, we have the option to merge spectra, or not.

## Importing Data from the ABI 4700

BSI has created a tool, separate from PEAKS Studio 3.0, Converter to extract the data from an ABI 4700's Oracle database. To start up the ABI 4700 Data Extractor, open it from the Start menu, for Windows, the default location will be "Programs → Peaks Studio → ABI Converter".

## System Requirements

This extractor can be installed on the same machine as ABI 4700 Explorer and the Oracle database (we will call this machine the 4700 SERVER in the following instructions) or another machine that has direct network access (no firewall, no proxy required) to the 4700 SERVER. Windows 2000 or Windows XP is recommended for use with this tool.

### Configuration:

Before using the ABI 4700 Data Extractor, we should configure it. To do so, we can choose “Settings” from the “File” menu. The configuration needs the following information:

- **4700 SERVER Name or IP Address:** input “localhost” if the Extractor is running on the 4700 SERVER (this is the default value), otherwise enter the IP address of the 4700 SERVER.
- **The socket used by the 4700 SERVER:** this is the port that the Oracle database listens to (the default is 1521).
- **Username to access the Oracle database:** most likely we do not need to change this (the default is “tsquared”).
- **Password to access the Oracle database:** mostly likely we do not need to change this one either.

### Steps to do the data extraction:

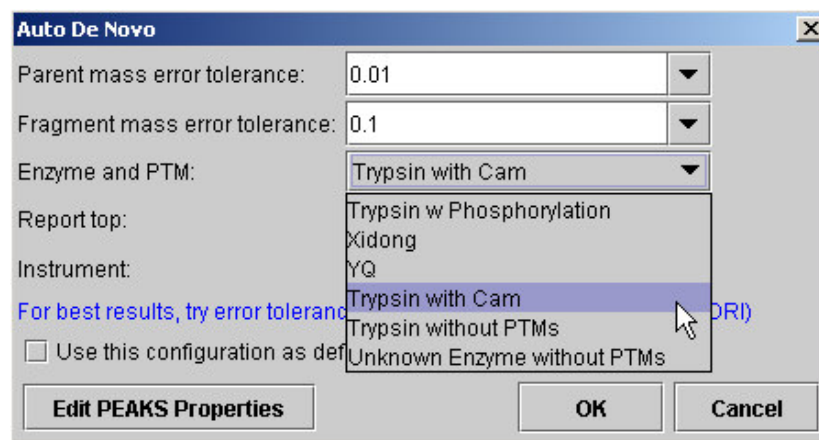
1. Load Spot Set List from the database (Do it via menu File | Load Spot Set List) The extractor will export the peak list of a spot set into a PKL file.
2. Open a Spot Set (menu File | Open Spot Set) Spot Set Chooser will help the user to choose a spot set. After selecting a spot set, click 'OK' to open it. The job run information of a spot set will be shown.
3. Select a job run There is a radio button before each Job Run, only the MS/MS job run can be selected for export, because we need the precursor information. Select a Job Run and click 'Convert' to do the extraction.
4. Choose a filename to save After clicking the 'Convert' button, the user needs to input a file name. And the peak lists of the selected job run will be exported.

## Using Peaks Studio with modifications (PTM)

PEAKS Studio 3.0 provides the most flexible handling of post-translational modifications of any software built for de novo sequencing and protein ID. Users are free to create their own modifications (see the **Creating a New PTM** section), and search for any combination and any number of modifications.

In order to search for modifications, we must tell Peaks which ones to look for. To do so, we must create and use “Enzyme/ PTMs set”. For more help creating

Enzyme/PTMs sets please refer to the **Peaks Properties Configuration** part of this chapter – look for the **Enzyme/PTMs Set editor** heading, and more specifically, the **Creating a new Enzyme/PTMs set** section.



Open the PEAKS Properties dialogue, by clicking the ‘Edit PEAKS Properties’ button from the Auto de novo properties dialogue, or the Protein Id properties dialogue. Ensure that the “Enzyme/PTMs set” tab is selected and click the ‘New’ button.

In the first screen that appears (under the ‘Name’ tab), we should choose a name that refers to the enzyme we used to digest and reminds us of the PTM Peaks must look for. In the ‘Enzyme’ tab, we must select the enzyme that we used to digest our sample from the drop-down list. Finally, in the ‘Modifications’ tab, we must select which PTMs Peaks should look for. Select PTMs as Varied or Fixed by clicking on a PTM in the list on the left, and pressing the ‘Select as Fixed’ button or ‘Select as Varied’ button. Press the ‘OK’ button to save this set and it will appear in the list of Enzyme/PTMs sets. For our convenience, this set will be saved within Peaks since we will probably process many samples this same way.

Now that we have created the Enzyme/PTMs set we can select it before running auto *de novo* or protein ID.

Remember, when doing protein identification, we will get best results if we:

**The more variable PTM we turn on, the more ambiguous will be the results.**


- For the Protein Identification database search portion, choose an Enzyme and PTM set that contains the correct enzyme and correct PTMs. If we don’t know which PTM to expect, turn them all on.
- For auto *de novo*, choose an Enzyme and PTM set that contains the correct enzyme, correct fixed PTM, but no variable PTM.

Remember, when doing auto *de novo* sequencing, we will get best results if we:

- Choose an Enzyme and PTM set that contains the correct enzyme, correct fixed PTM and a few variable PTM.

## Auto De novo Sequencing

To begin auto *de novo* sequence derivation, we:

1. In the *Peptide Data* Frame, select the data file(s) containing the spectra that we wish to sequence by Auto *de novo*. We can also select an individual spectrum, or a few spectra within a data file; auto *de novo* will proceed on only the spectra selected.
2. Click the  Automatic *De novo* toolbar icon

Or

Select “Auto *De novo*” from the “Tools” menu.

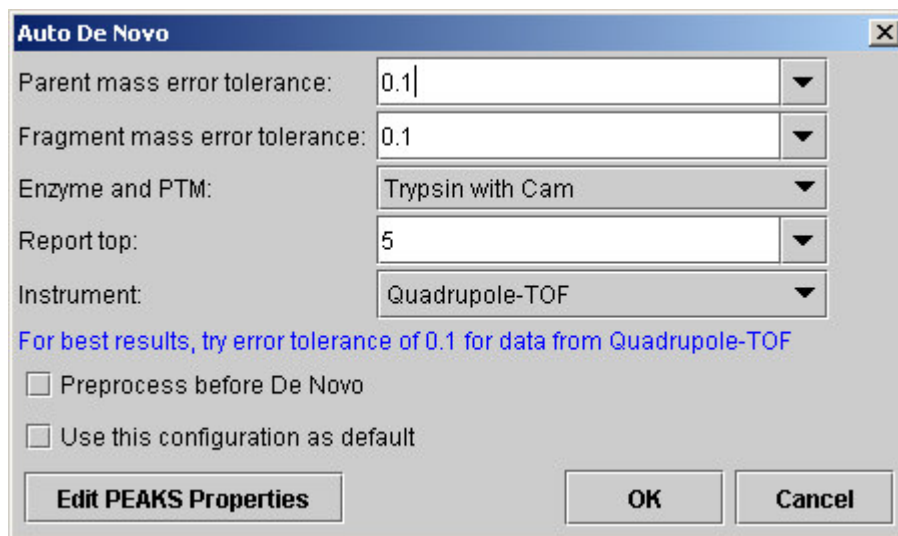
Or

Right click on the selected spectra or data files and select “Auto *De novo*” from the popup menu

The Auto *de novo* Parameters dialogue window will appear:

**Suggested values for error tolerance appear on-screen. In most cases, we can use this number for both parent and fragment error.**

**We should begin by using the suggested error values, then try some slightly higher or lower ones to find the best result.**





3. If we wish to change any of these parameters, we do so now.

- Parent error tolerance: how much random and systematic experimental error on the parent/precursor ion mass PEAKS will account for in its analysis.
- Fragment error tolerance: how much random and systematic experimental error on the parent/precursor ion mass PEAKS will account for in its analysis.
- Enzyme and PTM: enzyme that we used to digest our protein sample, and PTM that have acted on it. See the above section, Using **PEAKS Studio with Modifications PTM**, for help.
- Report top: how many peptide sequences PEAKS will report.
- Instrument: the type of spectrometer that produced our data.
- Preprocess before de novo: whether or not to preprocess (eliminate noise, identify charge states, and centroid) the MS/MS spectra before de novo.

#### Notes on pre-processing

BSI highly recommends using PEAKS to preprocess all data, as opposed to using instrument vendor software, if the data is to be used by PEAKS. PEAKS preprocessor should not be used on data that has already been pre-processed as this will have adverse effects on the results (unless it is ion-trap data).

4. Press the “Ok” button to commence Auto *de novo* sequencing.

Once a job is submitted to PEAKS Studio 3.0, it is added to the Task Queue for processing. After processing, the job is removed from the task queue list, and the  icon beside the spectrum (in the Peptide Data Frame) changes to light green  and/or an asterisk (\*) appears.

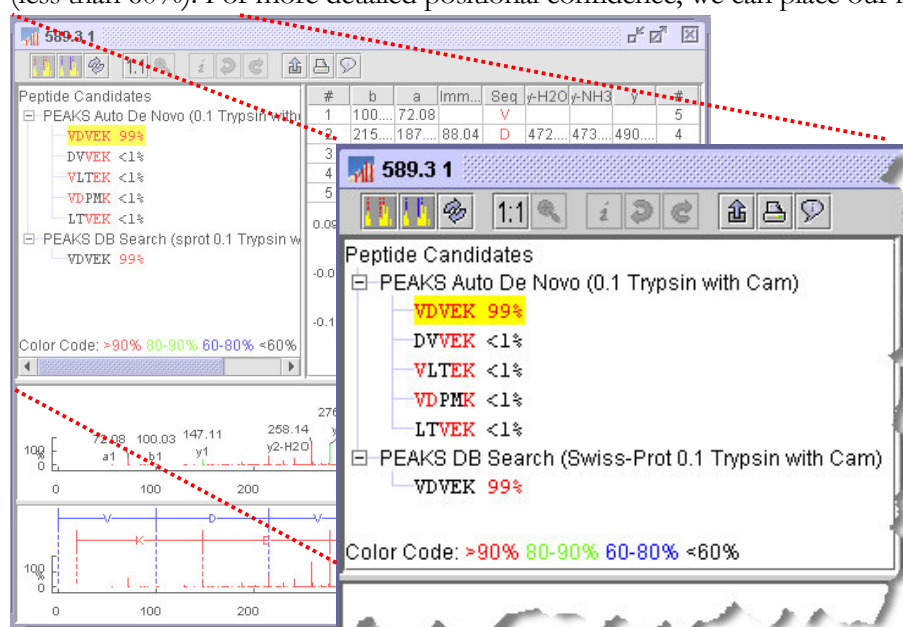
## Viewing Auto de novo Results

After performing auto *de novo* on a spectrum, we may wish to see what the algorithm determined the peptide sequence to be, and review the results for ourselves. To do so, we click on the spectrum of interest in the Peptide Data Frame. This brings up the Main Processing Window for that spectrum.

The most likely peptide sequence candidate, as determined by auto *de novo*, will be automatically selected. This is found in the Peptide Candidates Frame, as the top listed candidate under 'PEAKS Auto De novo'. In the example above, this is the highlighted sequence VDVEK. Any modifications that have been found will be shown abbreviated and in sequence before the amino acid residue they are associated with. *If the PTM was defined/created by another PEAKS user on another system, the PTM will still be shown and it can be imported into the local PEAKS configuration as desired.*

**Confidence scores are probability based, on a scale of 0 to 100%**

Right next to the proposed sequence, the auto *de novo* confidence score is shown. Positional confidences (that is, confidence that the correct residue in each position has been identified) are readily available by color coding. **Red** represents a very high confidence (greater than 90%), **purple** represents a high confidence (80 to 90%) **blue** represents a medium confidence (60 to 80%) and **black** represents a low confidence (less than 60%). For more detailed positional confidence, we can place our mouse over




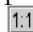
the sequence of interest. A Position Confidence Table will appear, showing the confidence that each tag/subsequence is correct.

In the Ion Table frame, select a cell from the Ion Table – each cell represents an ion. This will highlight its position on an error plot (scroll the Ion Table frame down if the error plot is not visible). A point close to the centerline indicates a more confident



**Zoom in far enough and we may resolve the isotopic ladder (depending on our instrument/data).**

result. We can also notice that the peak corresponding to the Ion we selected is highlighted on the Spectrum View. Select a whole column to highlight all the points for that type of ion. The types of ions displayed in the ion table can be configured, choose Configuration → Edit Ion Table from the Edit menu. FTMS users might find this particularly useful when sequencing data acquired using ECD.

By looking at the Spectrum View Frame, we can see the strength of the MS/MS peaks that PEAKS Studio 3.0 has set as ions. The view also displays the mass of the ions at that peak and the type of ion. Click on a peak to mark it and display its information at the top left corner of the Spectrum View Frame.

Zoom in by clicking and dragging horizontally on an area of the Spectrum view. The area over which we dragged will now take up the whole spectrum view. To un-zoom, press the  undo zoom icon; or press the  1:1 icon to return to the full spectrum view.

We may also zoom in on the spectrum using the Spectrum Alignment Frame. Again, click and drag horizontally on an area of the Spectrum view. The area over which we dragged will now take up the whole spectrum view. The blue bar beneath the Spectrum Alignment view shows where we are zoomed in. The white portion of the bar represents the area that we are zoomed in on.

We can toggle whether or not we'd like to see the positions of the y-ions and b-ions (and the proposed residues in sequence between them) on the alignment view by pressing the y-ion alignment  and b-ion alignment  icons in the main processing window toolbar.

To view another peptide candidate, as determined by auto *de novo*, click on another peptide in the Peptide Candidates Frame and under 'PEAKS Auto *De novo*'. The information in the Ion Table will change, as will the tags on the spectrum, to reflect the selected peptide candidate's sequence.

## Preparing to Edit sequencing results

We cannot change the results provided by PEAKS auto *de novo* or PEAKS database search. However, we can make a copy of any sequence and edit it using manual *de novo* techniques. To copy a sequence for editing:

1. Select a peptide sequence candidate from within the Peptide Candidates Frame. We can only select one peptide sequence candidate at a time.
2. Right click the mouse button while holding the mouse over that sequence. A popup menu will appear.

3. We can select the popup menu item “Copy for manual *de novo*”. In this case, the sequence will be automatically placed under the ‘Manual *De novo*’ heading. A ‘Manual *De novo*’ heading will be created if there wasn’t one there already.
4. Now we select our newly copied sequence, under the ‘Manual *De novo*’ heading, to display this sequence in the Ion Table Frame, Spectrum View Frame, and Spectrum Alignment Frame.

Now we are ready to edit the sequence, using manual *de novo* techniques.

## Manual De Novo Sequencing

We can use manual *de novo* sequencing to fine tune the results of an auto *de novo* analysis, or to perform our own sequencing analysis from scratch. PEAKS Studio 3.0 provides a set of tools to help us sequence a peptide, using graphic cues from the spectrum.

### Creating a fresh spectrum for sequencing

We cannot change the results provided by PEAKS auto *de novo* or PEAKS database search. Thus, to begin manual *de novo* sequencing, we must either copy a sequenced peptide (see above section: Preparing to edit sequence results) or create a new peptide candidate for sequencing.

To create a new peptide candidate for sequencing:

1. Right click on the 'Peptide Candidates' heading, the 'Manual *De novo*', or any 'user defined type' heading. This will bring up a popup menu.
2. Select "New candidate for manual *de novo*" from the popup menu

A new candidate will be created under the 'Manual *De novo*' heading, or under the 'user defined type' heading if we selected a user defined type. The new candidate will not have been sequenced, so it will be represented by the mass difference across the spectrum (e.g. [945.15] ).

### Manual De novo Operations

**All operations occur in the Spectrum View Frame of the Main Processing Window.**

When the mouse is placed in the Spectrum View Frame, a blue (by default) bar follows the movement of the mouse. This is the *Position Bar* and it is used as a cursor for all manual *de novo* operations. The cursor's position on the m/z scale is enumerated on the top of the *Position Bar*.

#### Selecting a peak

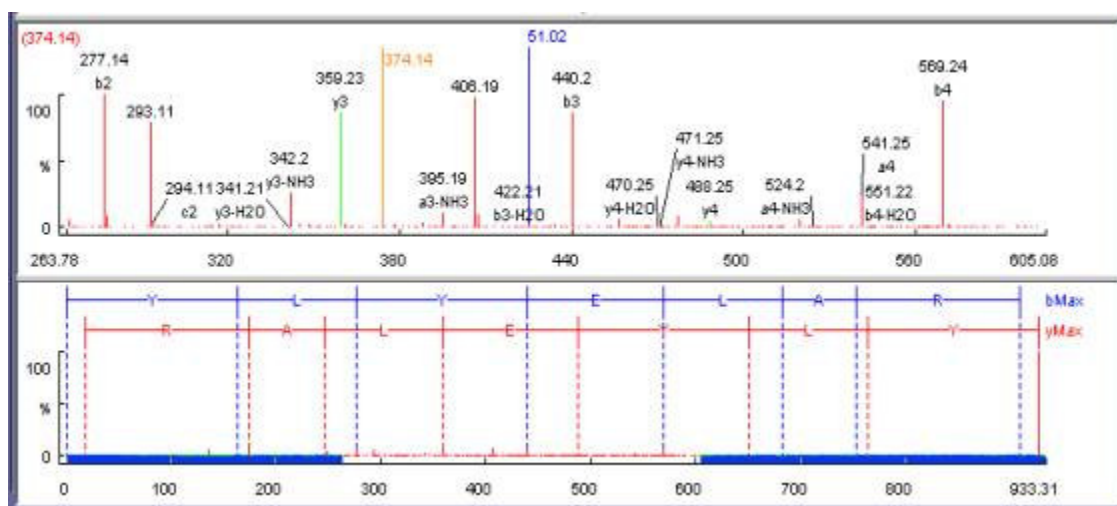
To select a peak, click on it. An orange (by default) bar, called *Freeze Bar*, indicates the selected peak.

Alternatively an ion peak can be selected by clicking on its corresponding cell in the Ion Table.

#### Measuring distance along the m/z scale

Once a peak is selected with the *Freeze Bar*, moving the mouse left or right will display the *Position Bar* along with a value that represents the m/z difference (as an absolute value) between the selected peak (orange) and the *Position Bar* (blue). In the example below, the distance between the selected peak and the position bar is 51.02 Daltons.

---



### Measure the m/z difference between two PEAKS

Select a peak (orange line by default) with the *Freeze Bar*, and move the mouse to the left or right. Hold the *Position Bar* above another peak. The number above the *Position Bar* is the difference between the two PEAKS

### Deselect a peak

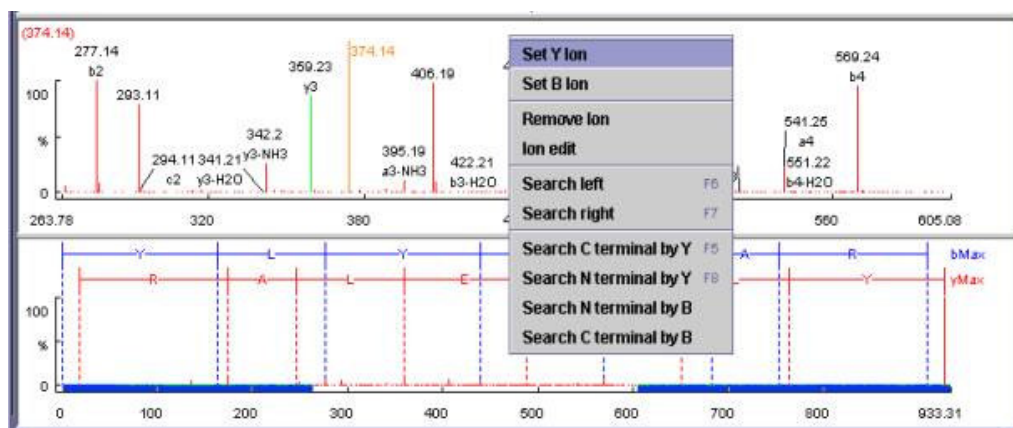
Double click anywhere in the Spectrum View Frame

### Zoom in on part of the spectrum

In the Spectrum View Frame, or the Spectrum Alignment Frame, click and drag the mouse horizontally. The selected area will be shown in the Spectrum View Frame.

### Add (remove) ions to (from) a peak

Select a peak, then right click the mouse anywhere in the Spectrum View Frame. Select “Set Y Ion” from the popup menu to designate the peak as a y ion, “Set B Ion” from the popup menu to designate the peak as a b ion, Select “Ion Edit” from the popup menu to view the Ion Editor dialog box and designate the peak as another ion.



**See PEAKS  
Environment  
Preference  
Configuration to  
find out how to  
change the  
sensitivity of the  
residue estimate.**

The Ion Editor dialogue allows us to add or remove ion designations to/from a peak. Select an ion from the ion choice list and press the “Add” button to add it to the selected ion list. Remove an ion from the selected ion list by selecting it and pressing the “Remove” button. We can type any comments we wish to make about the ion/peak, then press the “Apply” button to apply the changes to the selected peak.

Two short-cut keys may also be used to label a peak. Select a peak, then hit the 'y' key to add a y-ion and or the 'b' to add a b-ion to the peak.

After setting an ion, both the alignment view and the peptide sequence candidate name (as displayed in the peptide candidate frame) will change to reflect the mass remaining to be sequenced on either side of the ion. After setting two ions, PEAKS Studio 3.0 will estimate the residue found between them (if a residue corresponds closely to the mass difference). The peptide sequence candidate name (as displayed in the peptide candidate frame) will change to show the residue and the mass remaining to be sequenced on either side of the residue.


#### Using sequence tags

**Searching the C/N terminal by Y/B:** right click anywhere in the Spectrum View Frame to trigger the popup menu. From the menu, select the terminal search of interest. PEAKS will select the appropriate terminal tags and show them in the Ion Table Frame. We may test the suitability of a tag by clicking on its radio button; the tag will be shown, in position, on the Spectrum View. We may insert one or more tags by clicking on their checkboxes, then clicking the “Apply” button. Press the “Cancel” button at any time to exit the search discarding changes.


**Two short cut keys  
can be used: 'F6'  
for searching the  
left side and 'F7'  
for searching the  
right side.**

**Search a sequence tag:** select a peak with a defined ion (i.e. an ion that has been labeled with a peptide). Right click to trigger the popup menu, then select “Search Right” or “Search Left” to search peptide tags either to the right or left of the selected peak. PEAKS will select the appropriate terminal tags and show them in the Ion Table Frame. We may test the suitability of a tag, by clicking on its radio button; the tag will be shown, in position, on the Spectrum View. We may insert one or more tags by clicking on their checkboxes, then clicking the “Apply” button. Press the “Cancel” button at any time to exit the search discarding changes.

#### Undoing an edit

If we have made an error in our sequencing it is possible to undo the change. With the Peptide candidate still selected in the Peptide Candidates Frame, click the previous peptide  button, to return to the previous peptide sequence. We can click this button multiple times to return to successively earlier stages in our edit.

#### Redoing an edit

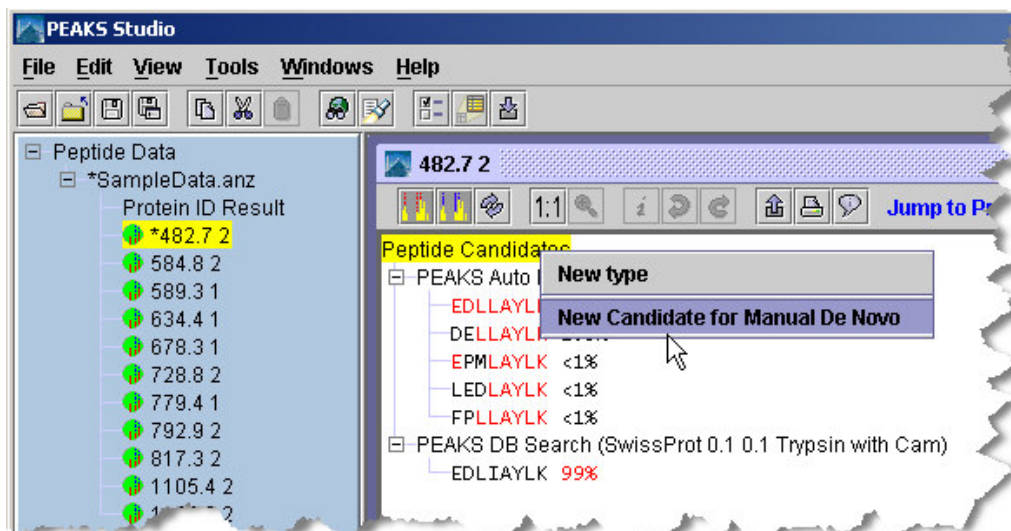
If we have undone one too many changes, we can redo that change by clicking the next peptide  button. We can click this button multiple times to proceed to successively later stages in our edit.

## Entering a sequence to see how well it fits the data

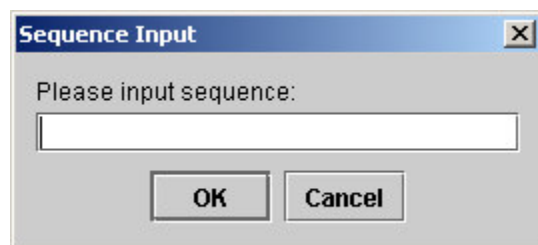
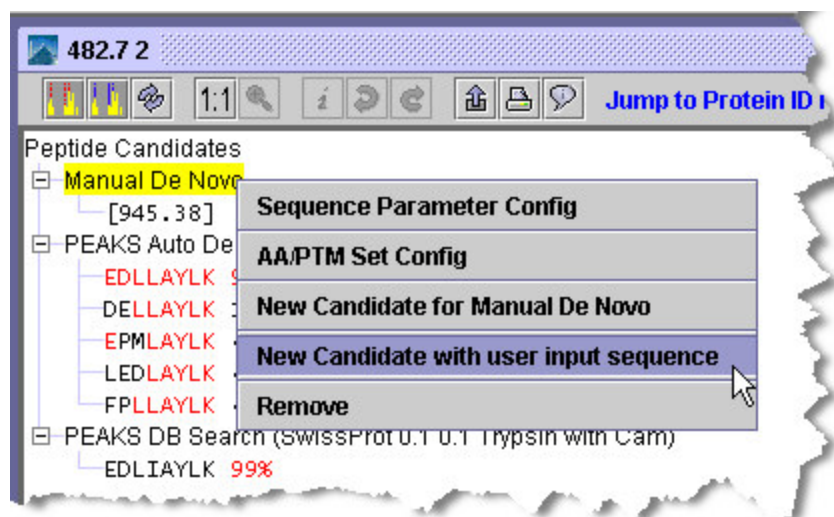
If the data is ambiguous, PEAKS Studio 3.0 may not have displayed a particular candidate that we wish to evaluate, after auto de novo, or protein ID. We may enter this sequence and have PEAKS Studio 3.0 find if there is any evidence for it in the data.

For instance, PEAKS may give the sequence RMYNVHGC(phosphorylationS)K for a particular spectrum, and we may wish to see if there's any evidence for the phosphorylation being on the Tyrosine. As such, we may type in our own version of the sequence and have PEAKS find ions that might support our hypothesis.

To do so, open the spectra in the Main Processing Window, and right click on “Peptide Candidates” (in the Peptide Candidates Frame). Then, from the pop-up menu that appears, choose “New Candidate for Manual De Novo”.



A new node will appear with the heading “Manual De Novo” and beneath it will be the mass of the residues yet to be sequenced (in square brackets). Right-click on this heading. In the pop-up menu that appears, choose “New Candidate with user input sequence”, and the Sequence Input dialog box will appear.



We can now enter our proposed sequence. The total mass of the residues, modifications, and un-sequenced masses should equal the total mass of the peptide (minus water). We might find the mass calculator tool (Tools menu), useful in this regard.

**Short forms for the modifications may also be used.**

#### Enter sequences in the format:

MPELAYLK

[228.09]ELAYLK

DE[226.168]AYLK

EDLLA(phosphorylationY)LK

DE[226.168]A(phosphorylationY)LK

Then press the OK button. The sequence we just entered will appear under the “Manual De Novo” heading, and when selected, the ions that PEAKS has found to match the proposed sequence appear on the spectrum, spectrum alignment view, and ion table.

## Protein Identification

PEAKS launches an amalgamative approach to protein identification called **inChorus**. With inChorus protein identification technology, we can use PEAKS together with several other protein identification methods. This will deliver more protein coverage and more confidence in results than any one method on its own.


An integral part of the inChorus search, PEAKS own protein identification method is unique – an improvement on and the ideal compliment to existing tools. The unique approach is a combination of sequence tag searching and fragment ion mass matching.

The following two sections deal with usage of PEAKS protein identification on its own, and usage of inChorus protein identification.

### PEAKS protein identification

PEAKS Studio 3.0 uses peptide sequence information to filter the protein or EST database. So, to get useful protein identification results, we must first perform *de novo* sequencing on the spectrum data.

If we already have sequence information for this data, we may use this existing sequence information (manual or auto *de novo* sequences) to filter the database. If we do not have existing sequence information, or if we wish to refine our database search by providing brand new sequence information, we can ask PEAKS to perform auto *de novo* before searching the database. Brand new results will **not overwrite** any existing sequence data that we have.

1. In the *Peptide Data* Frame, we select the data file(s) that we wish PEAKS to use to identify our protein(s). This can be done by clicking on a data file's name in, the peptide data frame.
2. Click the "Protein identification" toolbar icon .

Or

Select "EAKS Protein ID" from the tools menu.

The Protein Identification Parameters dialogue window will appear

3. If we wish to change any of the protein identification search parameters, we do so now.

Parent mass error tolerance: how much random and systematic experimental error on the parent/precursor ion mass PEAKS will account for in its database search.

---

- Fragment mass error tolerance: how much random and systematic experimental error on the daughter/fragmentation ion mass PEAKS will account for in its database search.

**Suggested values for error tolerance appear on-screen. In most cases, we can use this number for both parent and fragment error. We should begin by using the suggested values, then try some slightly higher or lower ones to find the best result.**

**Protein Identification**

**Protein Identification Options**

Search in database: SwissProt

Parent mass error tolerance: 0.1

Fragment mass error tolerance: 0.1

Enzyme and PTM: Trypsin with Cam

Instrument: Quadrupole-TOF

Report top: 10

For best results, try error tolerance of 0.1 for data from Quadrupole-TOF

☐ Use existing peptide sequences

☒ Use existing peptide sequences and the results from fresh auto de novo

**Auto De Novo Options**

Parent mass error tolerance: 0.1

Fragment mass error tolerance: 0.1

Enzyme and PTM: Trypsin with Cam

Report top: 5

☐ Preprocess before data analysis

Edit Databases and Enzyme/PTM Sets OK Cancel

- Enzyme and PTM: enzyme that we used to digest our protein sample, and PTM that have acted on it. Protein or EST databases contain unmodified peptide sequences, so PEAKS will mathematically remove the PTM for comparison with the database.

### Best practices for setting modifications (PTM)

The developers have discovered that database searching often returns better results if the auto *de novo* analysis is run with no variable PTM (perhaps one or two if necessary), but with the correct enzyme and fixed PTM. Modifications should be then turned on for the database search function. *m/z* tolerance can also be adjusted separately for each phase to allow us to tweak the results.

- Search results in database: The default database is shown, but can be changed. See configuration section to find out how to change the default database.

- Use existing peptide sequences and the results from fresh Auto *de novo*: Select this radio button if we wish to generate brand new sequence information to use in filtering the database. Best practices dictate that we perform this auto *de novo* sequencing with parameters that differ slightly from the database search parameters.
- Preprocess before data analysis: whether or not to preprocess (eliminate noise, identify charge states, and centroid) the MS/MS spectra before de novo.

### Notes on pre-processing

BSI highly recommends using PEAKS to preprocess all data, as opposed to using instrument vendor software, if the data is to be used by PEAKS. PEAKS preprocessor should not be used on data that has already been de-convolved by instrument software as this will have adverse effects on the results (unless it is ion-trap data).


PEAKS preserves the original data, and does not save the results of its preprocessing. As such, the decision to preprocess or not should be independent of what we've already done with PEAKS.

4. Press the "Ok" button to commence Auto *de novo* (if we have so chosen) and subsequent protein identification.

If we have chosen to perform auto *de novo* prior to our database search, the Auto *De novo* process will appear first in the task queue. Once this is finished the database search will begin. If PEAKS finds protein candidates after searching the database, a Protein Identification results window will appear:

### inChorus protein identification

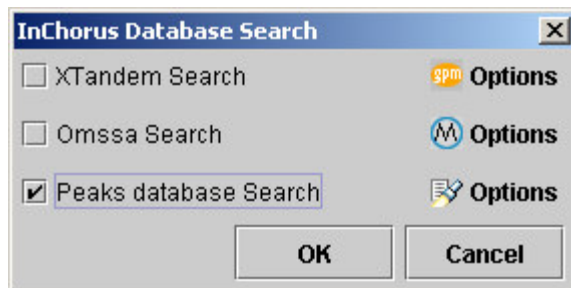
inChorus protein identification will call upon several search engines for protein identification. Once we load our data into PEAKS, we can invoke (start searches running on) several search engines at once. When all the results are returned, PEAKS Studio 3.0 will compare the answers and summarize everything in one simple report.

1. In the *Peptide Data* Frame, we select the data file(s) that we wish PEAKS to use to identify our protein(s). This can be done by clicking on a data file's name in, the peptide data frame.
2. Click the "Protein identification" toolbar icon .

Or

Select “inChorus Protein ID” from the tools menu

The inChorus database search launch window will appear:



**Help is sometimes available by holding your mouse over, or clicking on a part of the screen.**

Now we can select each of the protein identification tools we would like to use by putting a checkmark in the corresponding boxes. Search parameters for each program can be set by clicking the corresponding Options icon.

Options screens each of the programs available to inChorus are designed to work in the same way as options screens for the original programs. For help in setting search parameters for each program, please refer to that program’s user manual. In the case of PEAKS database search, please refer to the above section.

## Viewing Protein identification results

To view Protein identification results for a data file, we must have performed PEAKS protein identification or inChorus protein identification on that data file. The inChorus dynamic result report is more comprehensive than the original PEAKS protein identification result report.

### Viewing inChorus protein identification results

If we have run inChorus protein identification, both the PEAKS protein identification result report (showing PEAKS only results) and the inChorus dynamic result report will be available. Selecting a data file’s “Protein ID Result” (from just beneath the data file’s name in the Peptide data frame) will present us with the PEAKS only results. The inChorus dynamic result reports are represented by the time stamp and database searched (just under a data file’s “Protein ID Result”). Click on one to display it.

The inChorus dynamic result report allows us to view results by peptide or by protein and to check on the search parameters we used to generate these results.

**Search parameters** that we used when generating this report are preserved for future reference, and are available by clicking on the search parameters tab.

**Peptide view** is available by clicking on the peptide view tab. In tabular format, it displays relevant information about each peptide found. Since two peptides may match

**The section below, entitled viewing PEAKS protein identification results, describes the ‘PEAKS only’ report.**

to one MS/MS spectrum, they are visually grouped together (using colour) by MS/MS scan.

**Scores associated with each peptide represent the quality of the match and the number of programs in agreement on the peptide.**

SampleData.anz													
Peptide View				Search parameters									
Index	m/z	z	mass	Peptide	Mr(Calc)	Delta(M...)	Score (...)	Start	End	Accession ...	Peaks	XTandem	Omssa
1	482.7	2	963.4	EDLLAYLK	963.5276	0.1276	71.67	91	99	CYC_BOVIN	✓	✓	✓
1	482.7	2	963.4	AEKNFDLK	963.5025	0.1025	62.22	1379	1387	ACFD_ECO...	✓	✓	✓
2	584.8	2	1167.6	TGPNLHGLFGR	1167.615	0.015	99.44	27	38	CYC_BOVIN	✓	✓	✓
2	584.8	2	1167.6	EAPPGNAKAGEK	1167.5...	0.0116	60.0	5	17	CYC2_ARA...	✓	✓	✓
2	584.8	2	1167.6	TGPNLHGIFGR	1167.615	0.015	71.67	28	39	CYC_APTA...	✓	✓	✓
3	589.3	1	588.3	VDVEK	588.3119	0.0119	71.11	1048	1053	ACFD_ECO...	✓	✓	✓
3	589.3	1	588.3	EKGKK	588.3595	0.0595	62.78	3	8	CYC_BOVIN	✓	✓	✓
4	634.4	1	633.4	LFVQK	633.385	0.015	71.11	8	13	CYC_BOVIN	✓	✓	✓
4	634.4	1	633.4	KEMVK	633.352	0.048	63.89	180	185	CTN2_MO...	✓	✓	✓
5	678.3	1	677.3	YLPGTK	677.3748	0.0748	71.11	73	79	CYC_BOVIN	✓	✓	✓
5	678.3	1	677.3	EARFR	677.3609	0.0609	61.67	295	300	CTN2_MO...	✓	✓	✓
6	728.8	2	1455.6	TGQAPGFSYTDANK	1455.6...	0.0631	99.72	39	53	CYC_BOVIN	✓	✓	✓
6	728.8	2	1455.6	DAYAGGTKCSADLK	1455.6...	0.0665	60.56	986	1000	ACFD_ECO...	✓	✓	✓
7	779.4	1	778.4	MLFAGLK	778.4411	0.0411	71.11	79	86	CYC_BOVIN	✓	✓	✓
7	779.4	1	778.4	KLFMLK	778.4775	0.0775	63.33	7	13	CYC_HUM...	✓	✓	✓
8	792.9	2	1583.8	KTGQAPGFSYTDANK	1583.758	0.042	100.0	38	53	CYC_BOVIN	✓	✓	✓
8	792.9	2	1583.8	SEDTRYELLNPK	1583.772	0.0281	61.11	67	80	CYC_SPIOL	✓	✓	✓
9	817.3	2	1632.6	AEMENYEAGVYTEK	1632.6...	0.0978	70.56	555	569	CTN2_MO...	✓	✓	✓
9	817.3	2	1632.6	ASWLEDVDGKQETR	1632.7...	0.1744	65.0	820	834	ACFD_ECO...	✓	✓	✓
10	1105...	2	2208.8	CREWFWRLLYYLYLK	2208.1...	0.6658	70.0	427	442	GRT1_SCH...	✓	✓	✓

When we first load the report, it is sorted by MS/MS index. This is meant to represent scan number, or file name if working with DTA files. In the example above, there were two matches returned for MS/MS scan #1, EDLLAYLK and AEKNFDLK. For scan #2, there were three possible peptides matching, for number 3 there were two, and so on. Each peptide is given a score, and the protein it matches is displayed for reference, under “Accession No.” Each search program that agreed on the peptide is given a checkmark under its column.

This list is sort-able. Click on a column header to sort the list using that columns values. For example, sort by score. Clicking again on the same column header will toggle ascending/descending sort. When sorting, the grouping by MS/MS scan number will be retained except when sorting by Accession No.

Clicking on this report will highlight the spectrum in the Peptide Data tree on the left. Select multiple spectra by clicking and dragging, using shift+click or ctrl+click. In this way, the highest scoring peptides may be selected and isolated for further analysis.

**Protein view** is accessed by clicking on the Protein View tab. It collects all the peptide identifications together, summarizes which proteins were present in the sample, and groups homologous proteins together. The same information is displayed in the peptide view as in this protein view, however the results are organized to best enable us to evaluate at the protein level.

SampleData.anz

Peptide View Protein View Search parameters

Result from database SwissProt(0.1 0.1 Trypsin with Cam)

Accession	Mass	Score	Coverage	Description
<a href="#">CYC_BOVIN</a> <a href="#">more</a>	11554.328	72.58%	54.81%	(P00006) Cytochrome c.
<a href="#">CTN2_MOUSE</a> <a href="#">more</a>	105279.9	40.75%	4.62%	(Q61301) Alpha-2 catenin (Alpha-catenin related protein) (A
<a href="#">GRT1_SCHPO</a>	74400.78	13.06%	2.31%	(Q9C469) Zinc finger protein grt1.

[CYC\\_BOVIN](#) [more...](#) (P00006) Cytochrome c.  
 Mass:11572.339 Score:72.58% Coverage:54.81% [\[Show missed de novo results\]](#)

Mz	Charge	Mr(calc)	Start	End	Score	Peptide
482.7	2	963.52765	92	99	51.16%	<a href="#">EDLIAYLK</a>
584.8	2	1167.6147	28	38	63.01%	<a href="#">TGPNLHGLFGR</a>
589.3	1	588.3595	4	8	46.62%	<a href="#">EKGKK</a>
634.4	1	633.38495	9	13	50.89%	<a href="#">IFVQK</a>
678.3	1	677.3748	74	79	50.89%	<a href="#">YIPGTK</a>

This section of the report behaves in exactly the same way as the original PEAKS protein identification results report. A full description is in the next section.

## Viewing PEAKS protein identification results

Selecting a data file's "Protein ID Result" (from just beneath the data file's name in the Peptide data frame) will present us with the proteins found for that data file in the Protein Identification result window.

After selecting the results to view, the protein candidates Peaks has identified will be shown in the index section at the top of the report. Very similar proteins are grouped together. To see the full list of proteins within each grouping, click the [more](#) hyperlink. Another window will appear, showing all the related proteins:

SwissProt(0.1 0.1 Trypsin with Cam)

Result from database SwissProt(0.1 0.1 Trypsin with Cam)

Accession	Mass	Score	Coverage	Description
<a href="#">CYC_BOVIN</a>	11547.01	99.22%	50%	(P00006) Cytochrome c.
<a href="#">CYC_EQUAS</a>	11662.109	99.22%	50%	(P00005) Cytochrome c.
<a href="#">CYC_MINSC</a>	11418.004	98.04%	42.31%	(P00013) Cytochrome c.
<a href="#">CYC_MIRLE</a>	11460.998	98.04%	42.31%	(P00012) Cytochrome c.
<a href="#">CYC_CANFA</a>	11476.009	98.04%	42.31%	(P00011) Cytochrome c.
<a href="#">CYC_HORSE</a>	11676.125	95.78%	35.58%	(P00004) Cytochrome c.
<a href="#">CYC2_MOUSE</a>	11556.983	95.07%	31.73%	(P00015) Cytochrome c, testis-specific.
<a href="#">CYC_SCHGR</a>	11786.134	94.93%	29.91%	(P00040) Cytochrome c.
<a href="#">CYC2_RAT</a>	11585.962	91.46%	26.92%	(P10715) Cytochrome c, testis-specific.
<a href="#">CYC_LAMTR</a>	11515.0625	91.46%	26.92%	(P00028) Cytochrome c.

This window is equivalent to, and behaves the same way as, the Search Result Report Frame (of the Protein Identification Result Window) but lists only those proteins identified within that group. The following paragraphs describe the use of both.

Clicking on the Accession number hyperlink (in the index at the top) will scroll down to section of the peptide match report that corresponds with that Accession number. In this section of the report, the spectra that PEAKS found to match that protein are displayed, each with a score, and ordered by mass. It is possible that not all spectra from a data file are shown. Only the ones that matched the protein show up. **More spectra matching with higher confidence scores indicate better probability of having identified the correct protein.**

[CYC\\_BOVIN](#) (P00006) Cytochrome c.

**Mass:**11547.01 **Score:**99.22% **Coverage:**50% [\[Show missed de novo results\]](#)

Mz	Charge	Mr(calc)	Start	End	Score	Peptide
482.7	2	945.5171	92	99	99%	<a href="#">EDLIAYLK</a>
584.8	2	1149.6042	28	38	99%	<a href="#">TGPNLHGLFGR</a>
634.4	1	615.3744	9	13	93.58%	<a href="#">IFVQK</a>
678.3	1	659.36426	74	79	84.58%	<a href="#">YIPGTK</a>
728.8	2	1437.6525	40	53	99%	<a href="#">TGQAPGFSYTDANK</a>
779.4	1	760.43054	80	86	86.4%	<a href="#">MIFAGIK</a>
792.9	2	1565.7474	39	53	97.83%	<a href="#">KTGQAPGFSYTDANK</a>

[\[Return to top\]](#)

While viewing this section of the report, click on a Peptide sequence hyperlink to bring up the Main Processing window associated with that spectrum and peptide sequence. Or, click on the [more](#) hyperlink to again bring up the list of related proteins (see above). Or, click on the protein's accession number to access the protein view:

**Protein View**

[View with web browser](#)

Filename: D:\rogers\My Documents\PEAKS\Data\sample multiple spectral\Cytochrome-C.pkl  
**CYC\_BOVIN** Mass: **11547.01** Score: **99.22%**  
**(P00006) Cytochrome c.**  
Sequence Coverage: **50%**

NCBI BLAST search of [CYC\\_BOVIN](#)

Links to retrieve entries containing this sequence from NCBI Entrez:  
**Accession/ID Description**  
[CYC\\_BOVIN](#) (P00006) Cytochrome c.

Matched peptides shown in **Red**

1 GDVEKGKK**IF VQCAQCHTV** EKGKKHKTGP NLHGLFGRKT GQAPGFSYTD  
51 **ANKNKGITWG** EETLMEYLEN PKKY**IPGTKM** IFAGIKKKGE **REDLIAYLKK**  
101 ATNE

**Peptides List**

Mz	Charge	Mr(calc)	Start	End	Score	Peptide
482.7	2	945.52	92	99	99%	EDLIAYLK
584.8	2	1149.6	28	38	99%	TGPNLHGLFGR
634.4	1	615.37	9	13	93.58%	IFVQK
678.3	1	659.36	74	79	84.58%	YIPGTK
728.8	2	1437.65	40	53	99%	TQAPGFSYTDANK
779.4	1	760.43	80	86	86.4%	MIFAGIK

This protein view window shows the peptide matches for this protein in red. Clicking on the accession number in this window links to the NCBI Blast page and inputs search parameters for the protein. If we click the “View with web browser” button at the top of this window, PEAKS loads this same report into our default web browser in html format for print or incorporation into reports.

We may have performed database searching twice using the same data file. If this is the case, two sets of protein candidates will be available. They are both listed in the Database frame and can be identified by the name of the database we searched and the parameters we used when searching the database. In the example below, we searched through two separate databases. Clicking on either one brings up its results. If we’ve only searched once, there will only be one database to choose from and its results will be automatically displayed.

**Cytochrome-C.pkl**

Protein Candidates

- SwissProt(0.1 0.1 Trypsin with Cam)
- IPi Human(0.1 0.1 Trypsin with Cam)**

**Result from database SwissProt(0.1 0.1 Trypsin with Cam)**

Accession	Mass	Score	Coverage	Description
<a href="#">CYC_BOVIN</a> <a href="#">more...</a>	11547.01	99.22%	50%	(P00006) Cytochrome c.
<a href="#">SRD1_YEAST</a> <a href="#">more...</a>	25853.277	32.89%	8.44%	(P09007) Pre-rRNA processing protein SRD1.

[CYC\\_BOVIN](#) [more...](#) (P00006) Cytochrome c.  
Mass:11547.01 Score:99.22% Coverage:50% [\[Show missed de novo results\]](#)

### **A note on differentiating between results**

PEAKS Studio 3.0 differentiates between protein identification runs by the database search parameters that were used, not the auto *de novo* parameters. As such, if we do not change database search parameters before searching, we will overwrite whatever previous search results we had – no matter how much we alter the auto *de novo* parameters. If this presents a problem, please contact technical support.

Please see the walkthrough in chapter 3 for an example of viewing protein identification results.

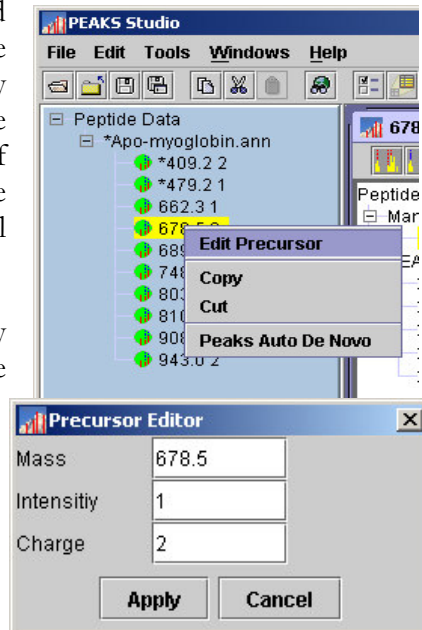
## Manipulating Data Files

### Editing Precursor information

It is possible that the precursor information, as listed in the Peptide Data Frame, is incorrect. If the charge listed is wrong, or if the m/z listed is even slightly incorrect (more than 0.1 Daltons, depending on the accuracy selected) it could really affect the quality of the results. In this case it is imperative that we change the precursor information. The change will only affect the ANZ file we are working on.

To edit precursor information, select a spectrum by clicking on its name, then right click the mouse while holding it in position over the name. A small menu will appear. Click on “Edit Precursor”.

In the dialogue that follows, type the new precursor information into the appropriate textboxes. Click the “Apply” button when finished to apply the changes. Click the “Cancel” button to exit, discarding changes.

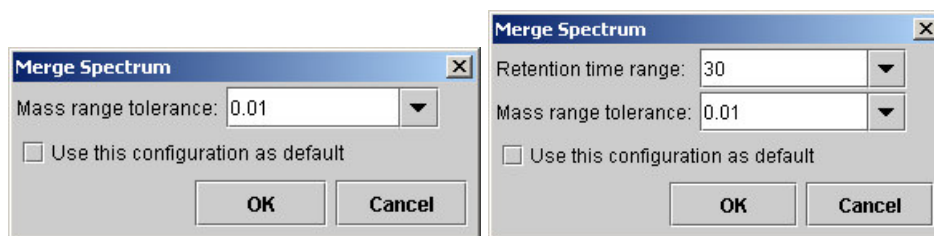


The precursor information will be updated, reflected by a change in the name of the spectrum in the Peptide Data Frame. A \* will also appear in front of that name, indicating that there is unsaved information pertaining to that spectrum.

### Merging MS/MS scans of the same peptide

If we've done several MS/MS scans of the same peptide, we may want to reduce the amount of data to process, and at the same time, improve the data quality, by merging all of a peptide's MS/MS scans together. Often, we choose to merge spectra while loading a data file.

To merge spectra after opening a data file, choose Merge Spectra from the Tools menu. The Merge Spectrum dialogue will appear. After pressing the OK button, MS/MS spectra whose parent ions are within this mass range of each-other will be merged together. *If the data file also contains retention time information, we can merge spectra whose parent ions' mass and retention time are closer together than the specified mass range and retention time range.*



**Changes made to the original spectrum after duplication will not affect the duplicated spectrum.**

## Cutting and Copying Spectrum Data

If we wish to move spectrum data from one data file to another we may do so by copying and pasting it (see below for pasting instructions). Also, we may wish to make a copy of the spectrum in the same data file in order to re-sequence an individual spectrum using different preferences. Cutting spectrum data will remove it completely until pasted. Copying spectrum data will duplicate the spectra when pasted. To cut/copy spectrum data:

Select a spectrum by clicking on its name (select multiple spectra by holding down the ‘control’ key and clicking on any number of spectrum) in the Peptide Data Frame.

Right click on one of the selected spectra. A small pop-menu will appear. Select “Cut” or “Copy”

OR

Click the “Copy” button  or “Cut” button  in the main toolbar.

Copied/Cut items will remain on the clipboard until replaced by another copied/cut item. **Warning: unless pasted, a cut item will be lost, as subsequent cut/copied items will displace it from the clipboard.**

## Pasting Spectrum Data

After having copied or cut spectrum data, we would like to paste it into another data file, or the same data file. To paste spectrum data:

1. Select the data file into which we wish to paste the spectrum (or spectra) by clicking on its name in the Peptide Data Frame. *You may only choose to paste into one data file at a time.*
2. Right click on one of the selected spectra. A small popup menu will appear. Select “Paste” from the popup menu.

OR

Click the “Paste” button  in the main toolbar.

The pasted spectra will appear in the Peptide Data, under the data file into which we pasted.

## Selecting unmatched de novo results

**If we know which proteins to look for, we can create our own FASTA database to search against.**

When working with unknown organisms, abundant but uninteresting proteins (like keratin) can get in the way. We may find it more convenient to eliminate them from the analysis. To do so, we must first identify which peptides belong to those proteins. To do so, run PEAKS Studio 3.0’s protein identification tool. The proteins identified in the sample will be shown in the protein ID report.

In the Protein ID Result report, scroll down to an abundant, but uninteresting protein, and choose [\[Show missed de novo results\]](#).

CYC\_BOVIN [more...](#) (P00006) Cytochrome c.  
Mass:11547.01 Score:99.49% Coverage:50% [\[Show missed de novo results\]](#)

Mz	Charge	Mr(calc)	Mr(exptl)	Score	Peptide
482.7	2	945.517			
584.8	2	1149.604			
634.4	1	615.374			
678.3	1	659.364			
728.8	2	1437.6525	40 53	99%	TGQAPGFSYTDANK

**Choose Threshold**  
Please choose the threshold to filter the missed de novo results:  
90%  
OK Cancel

A dialogue box will appear, asking us to choose the threshold to filter the missed de novo results. Spectra whose de novo sequences include a result with greater than this percentage confidence (>90% confidence in the example above) will be chosen. Press OK.

Right click anywhere in this report. From the pop-up menu that appears, click “Select spectra in data tree”.

**Missed de novo results**  
Missed auto de novo results  
Score threshold: 90%

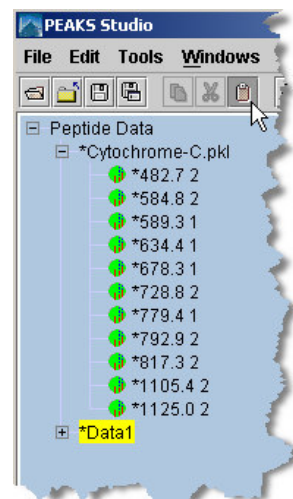
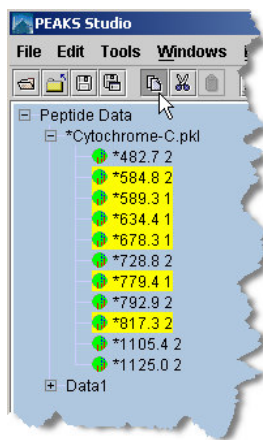
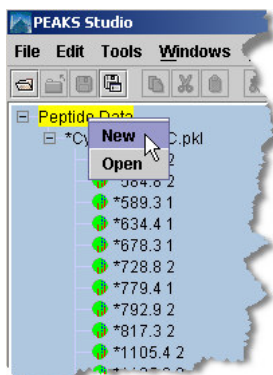
MZ	Charge	Score	Peptide	Source
482.7	1.0	98.6%	EDLLAYLK	PEAKS Auto De Novo (0.1 0.1 Trypsin with Can
584.8	1.0	99%	TGPNLHGLFGR	(0.1 0.1 Trypsin with Can
634.4	1.0	99%	LFVQK	(0.1 0.1 Trypsin with Can
678.3	1.0	99%	YLPGTK	(0.1 0.1 Trypsin with Can
779.4	1.0	97.62%	MLFAGLK	PEAKS Auto De Novo (0.1 0.1 Trypsin with Can
792.9	1.0	98.03%	KTGAGAPGFSYTDANK	PEAKS Auto De Novo (0.1 0.1 Trypsin with Can

Copy  
Report  
Select spectra in data tree

## Running protein identification on select spectra

When searching our dataset against a particular database, Peaks may not have found a hit for certain spectra. If these are good data, we may wish to try searching them against a more general database. Before we do so, we must **create a new data set** with these “good spectra that did not match”. This is essential so that we can organize our data well, and because Peaks will only run Protein ID on all the spectra in a data node. To create a new data node:

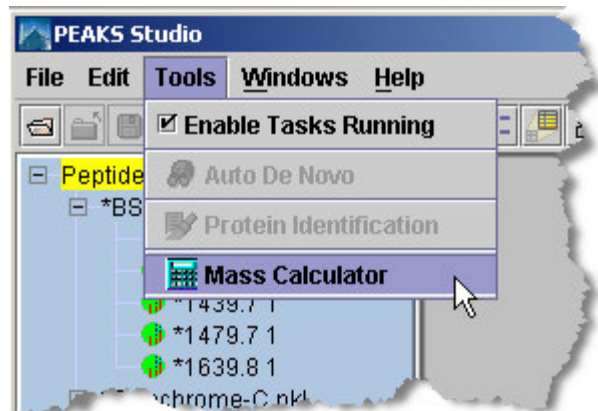
- 1. Make a new Data node by right clicking on the peptide data node. The new node appears as “Data1”.*
- 2. Select the relevant spectra using <shift>+click and <ctrl>+click, then press the copy button.*
- 3. Click the new node and press the paste button. Pressing the + next to Data1 will expand it and reveal the pasted spectra*



Now we can run protein identification on Data1. We can save that dataset in a new file, or any of the other functions that apply to regular nodes. Make sure the new node is selected before running protein ID (or any other function) on it.

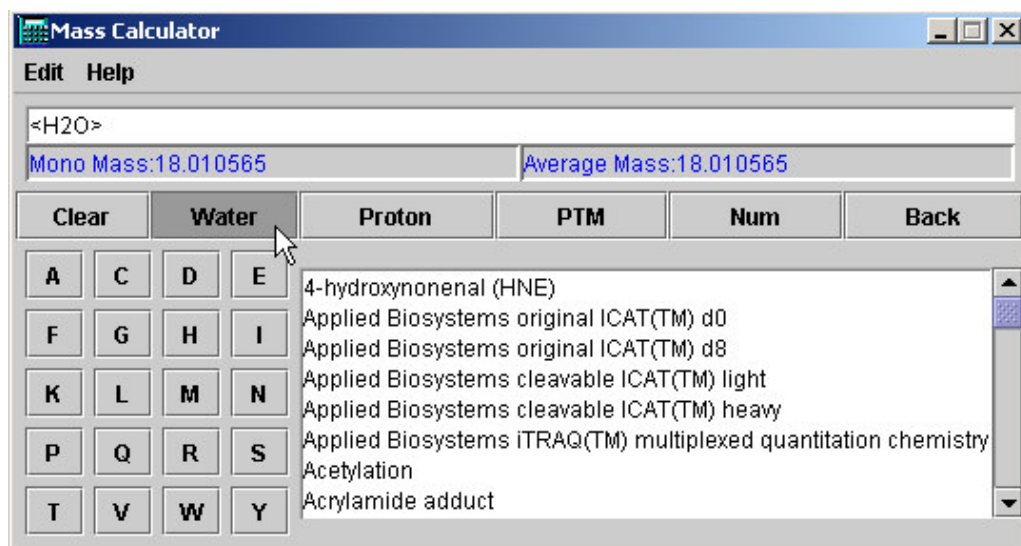
## Using the Mass Calculator

The mass calculator is a simple tool to help us determine the molecular weight of a peptide. To access the mass calculator, open the “Tools” menu and click “Mass Calculator”. The mass calculator will appear.



We can also load the mass calculator outside of Peaks, and separately. To access the mass calculator without having to load PEAKS, click on the mass calculator’s icon in the start menu. It will appear in the same program group as PEAKS Studio.

**When using the mass calculator, remember to start with water.**



**We can click any of these buttons multiple times to repeatedly add that mass.**

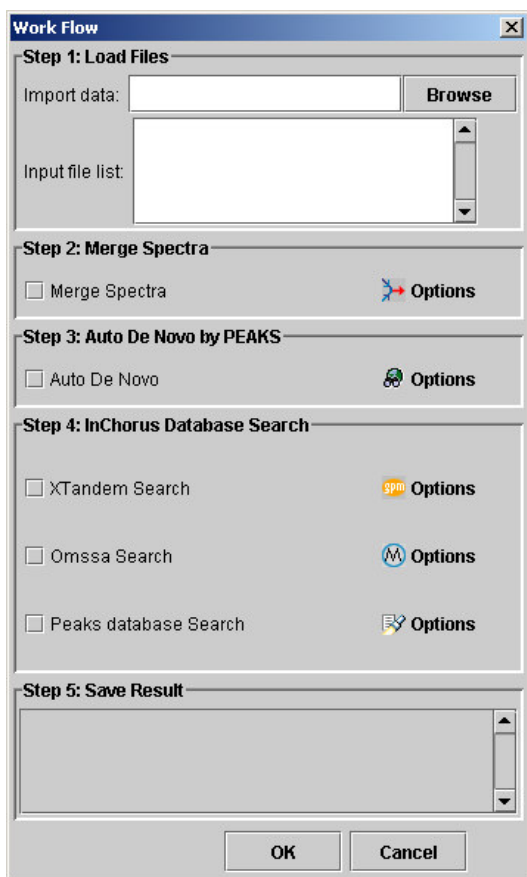
- Amino acids are represented by their single letter symbols. Clicking on an amino acid’s button will add it to the ‘sequence’ above, and add its mass to the mass of the peptide. Note that the peptide’s monoisotopic and average masses are both computed.
- Add a Proton by clicking the “Proton” button. It will be represented by an H in the ‘sequence’ above.
- To compute the mass of the peptide as if it had been modified, select a PTM from the list, and press the “PTM” button to apply them to the peptide.

- If the PTM we wish to add does not appear in the list, we may wish to enter it's mass manually. To add a mass numerically, click the “Num” button and enter a numeric value in the dialogue box that appears. Press the “OK” button on the dialogue and the mass will be added to the sequence.
- To remove a mass that we've just added to the peptide, press the “Undo” button.

## Creating a high-throughput workflow

In some situations, we may have many data sets that we wish to process all at once, and in the same way. PEAKS Studio 3.0 allows us to do this kind of work, and with minimal effort on our part. By setting up a workflow, we can start a batch process of several data files, and not worry about it until it is finished.

It is important to note that all the files we load will be processed in exactly the same way, using exactly the same parameters. If we want to do some differently than others, we must set up another workflow.



and/or save location.

Step1: Load files – click the browse button to open a file chooser. From the chooser, select several files by shift+click or ctrl+click, and pressing the “OK” button. Load more files by pressing browse again, or remove them from the list by right clicking on them.

Step2: Merge Spectra – choose whether or not to merge MS/MS scans of the same peptide (within each data file, not between files).

Step3: Auto de novo – choose whether or not to do auto de novo sequencing. Note that PEAKS database search requires some de novo sequencing results.


Step 4: inChorus protein identification – choose which protein identification programs to run against the data.

Step5: Save results – each result will be saved automatically into an .ANZ file with the same name as the data file. All files will be placed in the same folder. Typing in the textboxes, or clicking each file's button changes the name

## Saving Results

Saving results will preserve our work for later use. Saving files in PEAKS's .ANZ format will preserve spectrum data, manual *de novo* sequence information, automatic *de novo* sequence information, protein identification results, and information about any PTM that were found in sequence.

To save the results of our analysis, we first select the data file we wish to save in the Peptide Data Frame.

To save, click the  icon in the main window toolbar, select "Save" from the "File" menu, or right click on the data file and select "save" from the popup menu. This will save the processed spectra in ANZ format and of the same name as the data file we opened.

To change the name of the ANZ file, choose "Save as" from the "File" menu, or right click on the data file and select "Save as" from the popup menu. You may then change the file name.

To save all currently opened data files, select "Save all" from the "File" menu.

To export data to a PKL file, we select the data file (not an individual spectrum) to export. Then, from the "File" menu, select "Export", then "Export PKL File". The spectrum data will be saved in PKL format, but all sequencing and protein data will be lost.

To export peptide sequencing results to a FASTA format file, select the data file (not an individual spectrum) to export. Then, from the "File" menu, select "Export", then "Export Peptide Sequence". The sequencing data will be saved in FASTA format, but will not retain any spectrum data.

To export results to an HTML file, select the data file (not an individual spectrum) to export. Then, from the "File" menu, select "Export", then "Export HTML File". Peaks will then ask us which results we would like to export. We can choose from any *de novo* sequencing or protein ID run we have done. Each will be listed with the parameter set we used.

## Frequently Asked Questions

*The PEAKS FAQ online may contain more answers. Check [www.bioinformaticsolutions.com/faqs/peaks.php](http://www.bioinformaticsolutions.com/faqs/peaks.php)*

### 1. What is .ANZ format?

The ANZ format is zip-compressed, annotated data files in XML format. PEAKS uses it to save MS/MS information and peptide information. It supports both single MS/MS spectrum data and multiple spectra data. All PEAKS products accept and save files in ANZ format.

Saving files in PEAKS's .ANZ format will preserve spectrum data, manual *de novo* sequence information, automatic *de novo* sequence information, protein identification results, and information about any PTM that were found in sequence.

Each ANZ contains an ANN index file, and a folder called 'spectra' containing ANN data files (all use the same extension: 'ANN'). Each ANN data file contains the MS/MS information and peptide information from one spectrum. An ANN index file can be used to organize multiple spectra. The ANN index file links to the ANN data files.

### 2. What is the required system configuration for PEAKS?

PEAKS can be run on any computer that supports Sun's Java Runtime Environment (JRE) 1.4. On installation, PEAKS will install a dedicated JRE for its use, so it can co-exist with another version of Java on our machine. The system should also have: 1024MB RAM, 1GB free space on hard drive.

### 3. I started an auto *de novo* process, but nothing happened. What did I do wrong?

First, check the Tools menu and verify that Enable Tasks Running is checked. If it is disabled, the 'Task Queue' will be shown in red and no tasks in the queue will be processed.

It is possible that the process is running but you just don't notice. PEAKS processes the auto *de novo* task in the background so you can continue to work. This process takes several seconds. You will find the job is still in the queue if you check the Task Queue Frame. After the process is done, it will disappear from the queue. By selecting the spectrum in the Peptide Data Frame, you can find the peptide candidates, the spectrum image and ion alignment in the main process window.

#### **4. Can I edit the data file manually in PEAKS?**

You can edit the precursor information (m/z and charge) by right clicking on the precursor in the Peptide Data Frame. However, you cannot edit the spectrum data itself from within PEAKS.

#### **5. What enzymes should I use to digest the protein, in order to use PEAKS to interpret the MS/MS data?**

The most popular enzyme for digesting proteins for MS/MS analysis is Trypsin. PEAKS comes with an Enzyme/PTMs set, predefined for unmodified tryptic digests, to handle this common case. Tryptic peptides typically show excellent MS/MS spectra, and produce good sequences. If you wish to use a different enzyme, or sequence small peptides in entirety, you can create a new Enzyme/PTMs set and select another enzyme. Selecting an 'unknown enzyme' places no restrictions on the residues appearing at the C-terminal end. You may set them yourself.

#### **6. Can I edit/modify the result of PEAKS Auto *De novo*?**

You cannot modify the sequences returned by PEAKS Auto *De novo* search. However, you can copy the sequence for manual *de novo* to achieve the same goal. Right-click on the desired sequence and select Copy for manual *de novo*. You can now edit the sequence and ion assignments in the Manual *De novo* section of the Peptide Candidates tree.

#### **7. Why can I not find the Freeze bar to indicate the position of the peak in the ion edit window when I select an ion in the ion table?**

The spectrum is zoomed in too far, or not in the right area. Adjust your spectrum view's zoom to 1:1.

#### **8. How can I save the sequences resulting from auto *de novo*?**

You can copy the predicted sequences by right clicking on the sequences, and select copy. This will copy the sequence of letter symbols to the clipboard. You may then paste them into a word processor or text editor.

You can print images by clicking the right-most 'Print result image' button at the top of the main process window. Or you can save images by clicking the 'Export results as

image' button. The printed or saved images look slightly different to those displayed on the screen.

**9. What is the difference between save data file and save all files?**

Save data file: If current data file or the sequencing result of the selected data file(s) has been changed, PEAKS will save the data file and the sequence information in .ANZ format.

Save all files: If there is more than one data file loaded, using "save all files" will save all the data files and their sequence information in their respective .ANZ format files. There is no need to select any files.

**10. We saw a green triangle on the m/z axis of the spectrum. What does that represent?**

This green triangle is used to shown the location of the one charged precursor.

**11. Why I cannot delete a task from the Task Queue?**

There are 2 steps to remove a task from the Task Queue:

Disable the task running by clicking on "Enable task running" from the "Tools" menu to deselect it.

Right-click the task in the *Task Queue*. From the popup menu, choose "remove".

**12. Where can I get the log file for PEAKS?**

The log file can offer us some information for bug tracking. PEAKS sets the location of the log and configuration file, users can not change it. Its location is listed in the Environment Configuration Dialogue, under the Environment tab.

## Program Defaults

*These are the default settings for a few of PEAKS parameters. Many default settings can be changed.*

### Environment

Default Data Input Directory: last used directory

Default Data Output Directory: last used directory

Automatically close previous open spectrum when opening another one: no

### Spectrum Colors

Spectrum Peak: Red

Frozen Peak: Orange

Current Peak: Blue

Y\_Alignment: Red

B\_Alignment: Blue

Y\_Ion: Green

### Auto De Novo

m/z tolerance: 0.1

Residue and PTM: Trypsin without PTM

## DEFAULT SETTINGS

Report top: 5 candidates

Source: ESI

Instrument: Quadrupole Time of Flight (QTOF)

Use Auto *de novo* and database search configuration as default: no

## Database Search phase of Protein ID

m/z tolerance: 0.1

Residue and PTM: Trypsin with Cam

Instrument: Quadrupole Time of Flight (QTOF)

Report top: 10 candidates

## Manual de Novo

Maximum tag length: 3

Maximum return: 5

Default machine error: 0.1

## File types

Default save file type: ANZ file.

## About Bioinformatics Solutions Inc.

*BSI provides advanced software tools for analysis of biological data.*

Bioinformatics Solutions Inc. develops advanced algorithms based on innovative ideas and research, providing solutions to fundamental bioinformatics problems. This small, adaptable group is committed to serving the needs of pharmaceutical, biotechnological and academic scientists; and to the progression of drug discovery research. The company, founded in 2000 in Waterloo, Canada, comprises a select group of talented, award-winning, and intelligent developers, scientists and sales people.

At BSI, groundbreaking research and customer focus go hand in hand on our journey towards excellent software solutions. We value an intellectual space that fosters learning and an understanding of current scientific knowledge. With an understanding of theory, we can focus our talents on providing solutions to difficult, otherwise unsolved problems that have resulted in research bottlenecks. At BSI, we are not satisfied with a solution that goes only partway to solving these problems; our solutions must offer something more than existing software.

The BSI team recognizes that real people will use our software tools. As such, we hold in principle that it is not enough to develop solely on theory; we must develop with customer needs in mind. We believe the only solution is one that incorporates quality and timely results, a satisfying product experience, customer support and two-way communication. So then, we value market research, development flexibility and company-wide collaboration, evolving our offerings to match the market/user's needs.

Efficient and concentrated research, development, customer focus and market analysis have produced: PEAKS software for protein and peptide identification from tandem mass spectrometry data, RAPTOR and PROSPECT Pro software for threading based 3D protein structure prediction, and PatternHunter software for all types of homology search sequence comparison.

## PEAKS Software License

*This is the same agreement presented on installation. It is provided here for reference only.*

If you are evaluating a time limited trial version of PEAKS, and you wish to update the software to the full version, you must purchase PEAKS and obtain a full version registration key.

1. License. Subject to the terms and conditions of this Agreement, Bioinformatics Solutions (BSI) grants to you (Licensee) a non-exclusive, perpetual, non-transferable, personal license to install, execute and use one copy of PEAKS (Software) on one single CPU at any one time. Licensee may use the Software for it's internal business purposes only.
2. Ownership. The Software is a proprietary product of BSI and is protected by copyright laws and international copyright treaties, as well as other intellectual property laws and treaties. BSI shall at all times own all right, title and interest in and to the Software, including all intellectual property rights therein. You shall not remove any copyright notice or other proprietary or restrictive notice or legend contained or included in the Software and you shall reproduce and copy all such information on all copies made hereunder, including such copies as may be necessary for archival or backup purposes.
3. Restrictions. Licensee may not use, reproduce, transmit, modify, adapt or translate the Software, in whole or in part, to others, except as otherwise permitted by this Agreement. Licensee may not reverse engineer, decompile, disassemble, or create derivative works based on the Software. Licensee may not use the Software in any manner whatsoever with the result that access to the Software may be obtained through the Internet including, without limitation, any web page. Licensee may not rent, lease, license, transfer, assign, sell or otherwise provide access to the Software, in whole or in part, on a temporary or permanent basis, except as otherwise permitted by this Agreement. Licensee may not alter, remove or cover proprietary notices in or on the Licensed Software, or storage media; or use the Licensed Software in any unlawful manner whatsoever.

## **L I C E N S E   A G R E E M E N T**

4. Limitation of Warranty. THE LICENSED SOFTWARE IS PROVIDED AS IS WITHOUT ANY WARRANTIES OR CONDITIONS OF ANY KIND, INCLUDING BUT NOT LIMITED TO WARRANTIES OR CONDITIONS OF MERCHANTABILITY OR FITNESS FOR A PARTICULAR PURPOSE. LICENSEE ASSUMES THE ENTIRE RISK AS TO THE RESULTS AND PERFORMANCE OF THE LICENSED SOFTWARE.

5. Limitation of Liability. IN NO EVENT WILL LICENSOR OR ITS SUPPLIERS BE LIABLE TO LICENSEE FOR ANY INDIRECT, INCIDENTAL, SPECIAL, OR CONSEQUENTIAL DAMAGES WHATSOEVER, EVEN IF THE LICENSOR OR ITS SUPPLIERS HAVE BEEN ADVISED OF THE POSSIBILITY OF SUCH DAMAGE OR CLAIM, OR IT IS FORESEEABLE. LICENSOR'S MAXIMUM AGGREGATE LIABILITY TO LICENSEE SHALL NOT EXCEED THE AMOUNT PAID BY LICENSEE FOR THE SOFTWARE. THE LIMITATIONS OF THIS SECTION SHALL APPLY WHETHER OR NOT THE ALLEGED BREACH OR DEFAULT IS A BREACH OF A FUNDAMENTAL CONDITION OR TERM.

6. Termination. This Agreement is effective until terminated. This Agreement will terminate immediately without notice if you fail to comply with any provision of this Agreement. Upon termination, you must destroy all copies of the Software. Provisions 2,5,6,7 and 10 shall survive any termination of this Agreement.

7. Export Controls. The Software is subject at all times to all applicable export control laws and regulations in force from time to time. You agree to comply strictly with all such laws and regulations and acknowledge that you have the responsibility to obtain all necessary licenses to export, re-export, or import as may be required.

8. Assignment. Customer may assign Customer's rights under this Agreement to another party if the other party agrees to accept the terms of this Agreement, and Customer either transfer all copies of the Program and the Documentation, whether in printed or machine-readable form (including the original), to the other party, or Customer destroy any copies not transferred. Before such a transfer, Customer must deliver a hard copy of this Agreement to the recipient.

9. Maintenance and Support. BSI will provide technical support for a period of thirty (30) days from the date the Software is shipped to Licensee. Further maintenance and support is available to subscribers of BSI's Maintenance plan at BSI's then current rates. Technical support is available by phone, fax and email between the hours of 9 am and 5 pm, Eastern time, excluding statutory holidays.

10. Governing Law. This Agreement shall be governed by and construed in accordance with the laws in force in the Province of Ontario and the laws of Canada applicable therein, without giving effect to conflict of law provisions, and without giving effect to United Nations Convention on contracts for the International Sale of Goods.