

Upgrading to the latest version of PEAKS Studio Xpro

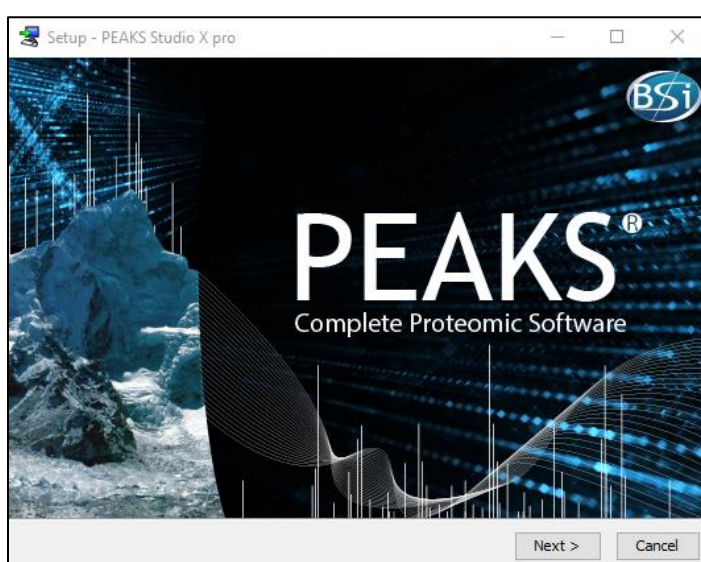
Today's latest MS instruments deserve advanced solutions that can harness the full capabilities of the technology. As a current subscriber of PEAKS' Service Plan Subscription (SPS) you receive new version upgrades at no additional cost. To do so, use the following instructions below:

1. Download PEAKS Studio Xpro onto the computer where your active SPS license of PEAKS is currently registered. The latest version of PEAKS, PEAKS Studio Xpro, can be downloaded from the following link:

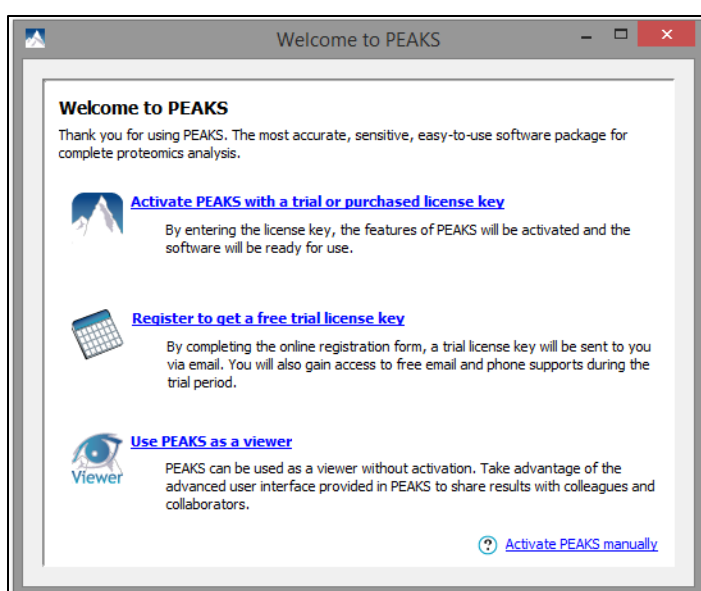
https://www.bioinfor.com/download/peaksstudio_106_20201221_setup_x64.exe

Note: If you need a 32-bit version of PEAKS, please send an email to support@bioinfor.com.

2. Follow the instructions for installation.



3. Register your active SPS license of PEAKS using the automated or manual activation.



Note: Make sure your activation is carried out on the same computer you currently have your license of PEAKS registered on. Each license is specifically assigned to a single computer. Activation of your license on another computer will not be successful and may affect your current PEAKS registration.

Note: If you do not have an active SPS, PEAKS Studio Xpro will be unable to activate.

Transferring your custom-made PTMs, enzymes, instruments, database list, and labeling methods




Previously custom settings created in PEAKS Studio are automatically transferred to PEAKS Studio Xpro. No additional work is required, and there is no need to recreate these settings. If you are upgrading to PEAKS Studio Xpro from an earlier version than PEAKS 8.5, please contact support@bioinfor.com for additional assistance.

Converting projects to PEAKS Studio Xpro

PEAKS Studio Xpro can open projects created in older versions of PEAKS. For PEAKS Studio X+, X, 8.5 and 8.0 projects, these can be loaded in directly into PEAKS Studio Xpro with no additional work required. With PEAKS Studio 7.5 projects on the other hand, PEAKS will prompt the project converter tool so that the project can be loaded into PEAKS – However, we do recommend that any older PEAKS project be rerun, if possible, before using PEAKS Studio Xpro new features. This is simply due to the increased accuracy and sensitivity introduced in PEAKS Studio Xpro algorithm and features. As for projects created in PEAKS older than version 7.5, the project conversion must be gradual, i.e. 7.0 to 7.5. Unfortunately, there is no way to convert 7.0 projects to PEAKS Studio Xpro directly. Please see PEAKS Studio Xpro User Manual, Chapter 4, Section 10.8 "Older PEAKS Projects", or contact support@bioinfor.com for more assistance if needed.

And wait... there is more!

The SPS is not just about upgrades, it is a full range of services we provide for you, from application and technical support, to bug fixes, patch releases and new feature requests. If you stick with us, we promise to constantly evolve our offerings to meet your needs.

<p>New version upgrades</p> <p>Stay on the cutting edge. Through innovative research and tireless development effort, BSI ensures that your software meets today's research needs. State-of-the-art tools lead to preeminent research findings</p> 	<p>Application & Tech Support</p> <p>Friendly, timely assistance. Our entire team is at your disposal and readily available by phone or internet. Get quick help with advanced functions or in-depth theoretical information from the team that built the tool.</p> 	<p>Bug Fixes and Patches</p> <p>Regrettably, computers are not always predictable. It may happen, though rarely, that your specific system or workflow may lead to an unforeseen problem. If this is the case, simply report the bug, and we will fix the issue for you.</p> 
-----------------------------------------------------------------------------------------------------------------------------------------------------------------------------------------------------------------------------------------------------------------------------------------------------------------------------------------------	--------------------------------------------------------------------------------------------------------------------------------------------------------------------------------------------------------------------------------------------------------------------------------------------------------------------------------------------------------------------	---------------------------------------------------------------------------------------------------------------------------------------------------------------------------------------------------------------------------------------------------------------------------------------------------------------------------------------------------------------------------